

# D6T

Track-Type Tractor



## Engine

Engine Model	Cat® C9.3 ACERT™	
Global Emissions	U.S. Tier 4 Interim/ EU Stage IIIB	
Gross Power – SAE J1995	171 k W	229 hp

## Engine (continued)

Engine Power – ISO 1439 6	169 k W	227 hp
Engine Power – ISO 14396 (DIN)		230 hp
Net Power – SAE J1349	153 k W	205 hp
Net Power – ISO 9249	153 kW	205 hp
Net Power – ISO 9249 (DIN)		208 hp

# D6T Specifications

Engine		
Engine Model	Cat® C9.3 ACERT™	
Global Emissions	U.S. Tier 4 Interim/ EU Stage IIIB	
Gross Power – SAE J1995	171 kW	229 hp
Engine Power – ISO 14396	169 kW	227 hp
Engine Power – ISO 14396 (DIN)		230 hp
Net Power – SAE J1349	153 kW	205 hp
Net Power – ISO 9249	153 kW	205 hp
Net Power – ISO 9249 (DIN)		208 hp
Net Power – 80/1269/EEC	153 kW	205 hp
Bore	115 mm	4.5 in
Stroke	149 mm	5.9 in
Displacement	9.3 L	567 in <sup>3</sup>

- Engine ratings apply at 1,850 rpm.
- Net power advertised is the power available at the engine flywheel when the engine is equipped with a fan at maximum speed, air cleaner, muffler and alternator.
- No deratings required up to 2286 m (7,500 ft) altitude, beyond 2286 m (7,500 ft) automatic derating occurs.

Transmission		
1.5 Forward	3.8 kph	2.3 mph
2.0 Forward	5.1 kph	3.2 mph
2.5 Forward	6.6 kph	4.1 mph
3.0 Forward	8.5 kph	5.3 mph
3.5 Forward	11.4 kph	7.1 mph
1.5 Reverse	4.8 kph	3.0 mph
2.0 Reverse	6.6 kph	4.1 mph
2.5 Reverse	8.4 kph	5.2 mph
3.0 Reverse	8.5 kph	5.3 mph
3.5 Reverse	14.6 kph	9.0 mph
Drawbar Pull:		
1.5 Forward	355.5 kN	79,910 lb
2.0 Forward	206.4 kN	46,410 lb
2.5 Forward	206.4 kN	46,410 lb
3.0 Forward	113 kN	25,360 lb
3.5 Forward	113 kN	25,360 lb

Undercarriage		
Shoe Type	Moderate Service	
Width of Shoe:		
XL/XL VPAT	560 mm	22 in
XW	760 mm	30 in
XW VPAT	710 mm	28 in
LGP	915 mm	36 in
LGP VPAT	790 mm	31 in
Shoes/Side:		
XL/XW	41	
LGP	45	
Grouser Height	65 mm	2.6 in
Pitch	203 mm	8.0 in
Ground Clearance	384 mm	15.0 in
Track Gauge:		
XL	1880 mm	74 in
XL VPAT	2134 mm	84 in
XW	2032 mm	80 in
XW VPAT/LGP/ LGP VPAT	2286 mm	90 in
Track on Ground:		
XL/XW	2840 mm	112 in
LGP	3250 mm	128 in
Ground Contact Area:		
XL	3.18 m <sup>2</sup>	4,929 in <sup>2</sup>
XW	4.31 m <sup>2</sup>	6,680 in <sup>2</sup>
LGP	5.95 m <sup>2</sup>	9,223 in <sup>2</sup>
XL VPAT	3.18 m <sup>2</sup>	4,929 in <sup>2</sup>
XW VPAT	4.03 m <sup>2</sup>	6,246 in <sup>2</sup>
LGP VPAT	5.10 m <sup>2</sup>	7,905 in <sup>2</sup>
Ground Pressure:		
XL	57.2 kPa	8.3 psi
XW	43.9 kPa	6.4 psi
LGP	33.5 kPa	4.86 psi
XL VPAT	64.7 kPa	9.4 psi
XW VPAT	52.0 kPa	7.5 psi
LGP VPAT	42.8 kPa	6.2 psi
Carrier Rollers/Side	1	
Track Rollers/Side		
XL/XW	7	
LGP	8	
Oscillation at Front Idler:		
XL/XL VPAT/ XW VPAT	103 mm	4.0 in
XW	100 mm	3.9 in
LGP/LGP VPAT	117 mm	4.6 in

- All dimensions above with SystemOne undercarriage.

Service Refill Capacities		
Fuel Tank	425.0 L	112.0 gal
Cooling System	64.4 L	17.0 gal
Engine Crankcase	24.6 L	6.5 gal
Powertrain	148.0 L	39.1 gal
Final Drives (each)	13.5 L	3.6 gal
Roller Frames (each)	25.0 L	6.6 gal
Pivot Shaft Compartment	5.0 L	1.3 gal
Hydraulic Tank	65.5 L	17.3 gal

Hydraulic Controls – Maximum Operating Pressure		
Bulldozer – Lift:		
Non-VPAT	19 300 kPa	2,800 psi
VPAT	21 550 kPa	3,125 psi
Bulldozer – Tilt:		
Non-VPAT	19 300 kPa	2,800 psi
VPAT	21 550 kPa	3,125 psi
Bulldozer – Angle:		
VPAT	21 550 kPa	3,125 psi
Ripper – Lift:		
Non-VPAT	19 300 kPa	2,800 psi
VPAT	21 550 kPa	3,125 psi
Steering	40 000 kPa	5,800 psi

## Hydraulic Controls – Pump

Type		
RPM at Rated Engine Speed:		
Fan	2,135 rpm	
Implement	2,135 rpm	
Steering	2,854 rpm	
Pump Output:		
Fan	93 L/min	25 gal/min
Implement	205 L/min	54 gal/min
Steering	195 L/min	52 gal/min
Lift Cylinder Flow	190 L/min	50 gal/min
Tilt Cylinder Flow	110 L/min	29 gal/min
Ripper Cylinder Flow	190 L/min	50 gal/min
Angle Cylinder Flow – VPAT	170 L/min	45 gal/min

## Hydraulic Controls – Main Relief Valve

Pressure Setting – Implement:		
Non-VPAT	21 700 kPa	3,150 psi
VPAT	24 400 kPa	3,540 psi

## Winch

Winch Model	PA56	
Weight	1203 kg	2,652 lb
Oil Capacity	67 L	17.8 gal
Winch and Bracket Length	1214 mm	47.8 in
Winch Case:		
Length	902 mm	35.5 in
Width	872 mm	34.3 in
Increased Tractor Length:		
XL/XW	516 mm	20.4 in
LGP	365 mm	14.4 in
Drum Diameter	254 mm	10.0 in
Drum Width	315 mm	12.4 in
Flange Diameter	505 mm	19.9 in
Drum Capacity:		
22 mm (0.88 in)	85 m	281 ft
25 mm (1.0 in)	66 m	218 ft
Winch Drive	Mechanical	
Control	Electric	
Overall Width	975 mm	38.4 in
Rope Diameter (recommended)	22 mm	0.88 in
Cable Ferrule Size (O.D. × Length)	54 mm × 67 mm	2.1 in × 2.6 in
Maximum Bare Drum:		
Line Pull	40 700 kg	89,800 lb
Line Speed	39.6 m/min	130 ft/min
Maximum Full Drum:		
Line Pull	34 600 kg	76,300 lb
Line Speed	68.3 m/min	224 ft/min

## Blades

Capacity:		
XL SU-Blade	5.31 m <sup>3</sup>	6.94 yd <sup>3</sup>
XL A-Blade	3.93 m <sup>3</sup>	5.14 yd <sup>3</sup>
XL VPAT-Blade	4.73 m <sup>3</sup>	6.19 yd <sup>3</sup>
XW SU-Blade	5.05 m <sup>3</sup>	6.60 yd <sup>3</sup>
XW A-Blade	4.30 m <sup>3</sup>	5.63 yd <sup>3</sup>
XW VPAT-Blade	5.08 m <sup>3</sup>	6.65 yd <sup>3</sup>
LGP S-Blade	3.70 m <sup>3</sup>	4.83 yd <sup>3</sup>
LGP A-Blade	5.22 m <sup>3</sup>	6.82 yd <sup>3</sup>
LGP VPAT-Blade	4.20 m <sup>3</sup>	5.50 yd <sup>3</sup>
Width:		
XL SU-Blade	3260 mm	10.7 ft
XL A-Blade	4160 mm	13.7 ft
XL VPAT-Blade	3880 mm	12.8 ft
XW SU-Blade	3560 mm	11.7 ft
XW A-Blade	4500 mm	14.8 ft
XW VPAT-Blade	4160 mm	13.7 ft
LGP S-Blade	4040 mm	13.3 ft
LGP A-Blade	5070 mm	16.7 ft
LGP VPAT-Blade	4160 mm	13.7 ft

## Ripper

Type	Fixed Parallelogram	
Ramp Angle	26 degrees	
Pocket Spacing	1000 mm	39.4 in
Shank Gauge	2000 mm	78.8 in
Shank Section	74 mm × 175 mm	2.9 in × 6.9 in
Number of Pockets	3	
Overall Beam Width	2202 mm	87 in
Beam Cross Section	219 × 254 mm	8.8 × 10 in
Maximum Clearance Raised (under tip, pinned in bottom hole)	514 mm	20.2 in
Maximum Penetration	457 mm	18.0 in
Maximum Penetration Force	6603 kg	14,557 lb
Pryout Force	9134 kg	20,137 lb
Weight:		
With One Shank	1634 kg	3,606 lb
Each Additional Shank	74 kg	163 lb

# D6T Specifications

## Weights

### Operating Weight:

XL A	21 148 kg	46,623 lb
XL SU	20 937 kg	46,158 lb
XL VPAT	23 663 kg	52,168 lb
XW A	22 068 kg	48,652 lb
XW SU	21 789 kg	48,036 lb
XW VPAT	24 112 kg	53,158 lb
LGP S	22 448 kg	49,489 lb
LGP A	23 482 kg	51,769 lb
LGP VPAT	24 569 kg	54,165 lb

### Shipping Weight:

XL A	17 738 kg	39,106 lb
XL SU	17 738 kg	39,106 lb
XL VPAT	20 385 kg	44,941 lb
XW A	18 564 kg	40,927 lb
XW SU	18 564 kg	40,927 lb
XW VPAT	20 793 kg	45,841 lb
LGP S	19 527 kg	43,050 lb
LGP A	19 527 kg	43,050 lb
LGP VPAT	21 264 kg	46,879 lb

- Operating weight includes blade, lubricants, coolant, full fuel tank, standard track, ROPS/FOPS cab, drawbar and operator.
- Shipping weight includes blade lift cylinders, lubricants, coolant, ROPS/FOPS cab, standard track and 10% fuel.

## Standards

ROPS/FOPS	ROPS meets criteria SAE J395, SAE 1040 MAY94, ISO 3471-1994/ FOPS meets ISO 3449-1992 Level II.
Brakes	Brakes meet the International Standard ISO 10265:2008.
Cab	Meets appropriate standards as listed below.

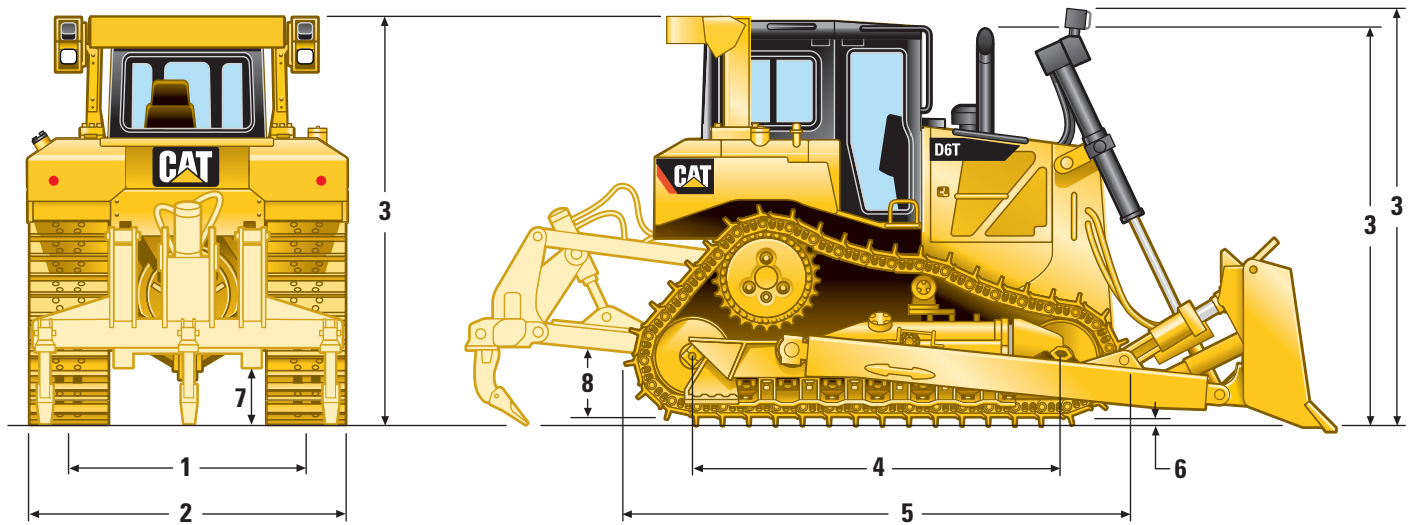
- The operator sound exposure Leq (equivalent sound pressure) measured according to the dynamic conditions in ISO 6396 is 79 dB(A) for a cab offered by Caterpillar when properly installed and maintained and with doors and windows closed when tested.
- Hearing protection may be needed when operating with an open operator station and cab (when not properly maintained or doors/windows open) for extended periods or in noisy environment.
- The exterior sound pressure level for a standard machine was measured according to the dynamic conditions in ISO 6395. On this machine equipped with a carrier roller, the sound level is 115 dB(A).

## Drive Train

Type	Mechanical
------	------------

## Dimensions

All dimensions are approximate.



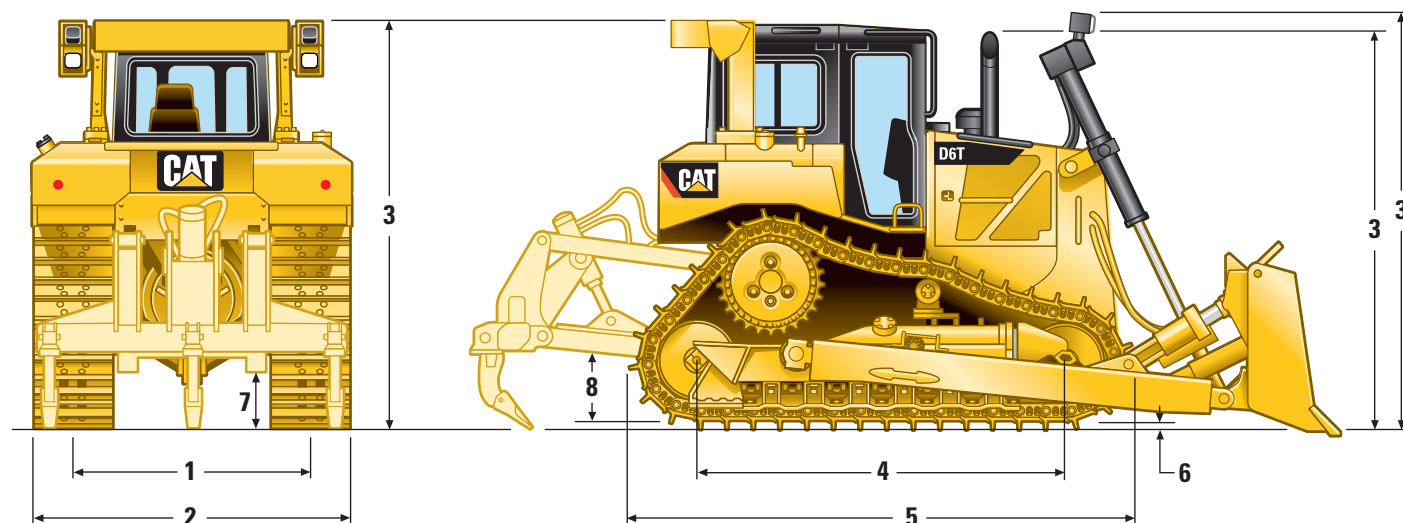
	XL		XL VPAT	
<b>1</b> Track gauge	1880 mm	6 ft 2 in	2134 mm	7 ft 0 in
<b>2</b> Width of tractor				
Over trunnions	2640 mm	8 ft 8 in	—	—
Without trunnions (std. track)	2440 mm	8 ft 0 in	2692 mm	8 ft 10 in
<b>3</b> Machine height from tip of grouser:				
Stack	3126 mm	10 ft 3 in	3126 mm	10 ft 3 in
ROPS	3169 mm	10 ft 5 in	3169 mm	10 ft 5 in
Premium Light Package	3310 mm	10 ft 10 in	3310 mm	10 ft 10 in
<b>4</b> Length of track on ground	2840 mm	9 ft 4 in	2840 mm	9 ft 4 in
<b>5</b> Length of basic tractor	3860 mm	12 ft 8 in	3860 mm	12 ft 8 in
With following attachments add:				
Drawbar	182 mm	7 in	182 mm	7 in
Ripper Multi-Shank (tip at ground line)	1370 mm	4 ft 6 in	1370 mm	4 ft 6 in
Winch	517 mm	20 in	517 mm	20 in
S Blade	—	—	—	—
SU Blade	1271 mm	4 ft 2 in	—	—
A Blade	1341 mm	4 ft 3 in	—	—
VPAT Blade	—	—	1504 mm	4 ft 11 in
<b>6</b> Height of grouser	65 mm	2.6 in	65 mm	2.6 in
<b>7</b> Ground clearance	384 mm	15 in	384 mm	15 in
Track pitch	203 mm	8 in	203 mm	8 in
Number of shoes per side	41		41	
Number of rollers per side	7		7	
Standard shoe	560 mm	22 in	560 mm	22 in
Ground contact area (std. track)	3.18 m <sup>2</sup>	4,929 in <sup>2</sup>	3.18 m <sup>2</sup>	4,929 in <sup>2</sup>
Ground pressure*	57.2 kPa	8.30 psi	64.7 kPa	9.38 psi
<b>8</b> Drawbar height	576 mm	23 in	576 mm	23 in
From ground face of shoe	511 mm	20 in	511 mm	20 in

\* XL and XW with SU blade, LGP with S blade with no rear attachments unless otherwise specified and calculated per ISO 16754.

# D6T Specifications

## Dimensions

All dimensions are approximate.



	XW		XW VPAT		LGP		LGP VPAT	
<b>1</b> Track gauge	2032 mm	6 ft 8 in	2286 mm	7 ft 6 in	2286 mm	7 ft 6 in	2286 mm	7 ft 6 in
<b>2</b> Width of tractor								
Over trunnions	2950 mm	9 ft 8 in	—	—	3480 mm	11 ft 5 in	—	—
Without trunnions (std. track)	2794 mm	9 ft 2 in	2997 mm	9 ft 10 in	3193 mm	10 ft 6 in	3150 mm	10 ft 4 in
<b>3</b> Machine height from tip of grouser:								
Stack	3126 mm	10 ft 3 in	3126 mm	10 ft 3 in	3176 mm	10 ft 5 in	3176 mm	10 ft 5 in
ROPS	3169 mm	10 ft 5 in	3169 mm	10 ft 5 in	3219 mm	10 ft 7 in	3219 mm	10 ft 7 in
Premium Light Package	3310 mm	10 ft 10 in	3310 mm	10 ft 10 in	3360 mm	11 ft 0 in	3360 mm	11 ft 0 in
<b>4</b> Length of track on ground	2840 mm	9 ft 4 in	2840 mm	9 ft 4 in	3250 mm	10 ft 8 in	3250 mm	10 ft 8 in
<b>5</b> Length of basic tractor	3860 mm	12 ft 8 in	3860 mm	12 ft 8 in	4247 mm	13 ft 11 in	4247 mm	13 ft 11 in
With following attachments add:								
Drawbar	182 mm	7 in	182 mm	7 in	—	—	—	—
Ripper Multi-Shank (tip at ground line)	1370 mm	4 ft 6 in	1370 mm	4 ft 6 in	1370 mm	4 ft 6 in	1370 mm	4 ft 6 in
Winch	517 mm	20 in	517 mm	20 in	397 mm	16 in	397 mm	16 in
S Blade	—	—	—	—	1168 mm	3 ft 10 in	—	—
SU Blade	1271 mm	4 ft 2 in	—	—	—	—	—	—
A Blade	1405 mm	4 ft 7 in	—	—	1475 mm	4 ft 10 in	—	—
VPAT Blade	—	—	1504 mm	4 ft 11 in	—	—	1412 mm	4 ft 8 in
<b>6</b> Height of grouser	65 mm	2.6 in	65 mm	2.6 in	65 mm	2.6 in	65 mm	2.6 in
<b>7</b> Ground clearance	384 mm	15 in	384 mm	15 in	434 mm	17 in	434 mm	17 in
Track pitch	203 mm	8 in	203 mm	8 in	203 mm	8 in	203 mm	8 in
Number of shoes per side	41		41		45		45	
Number of rollers per side	7		7		8		8	
Standard shoe	760 mm	30 in	710 mm	28 in	915 mm	36 in	785 mm	31 in
Ground contact area (std. track)	4.31 m <sup>2</sup>	6,681 in <sup>2</sup>	4.03 m <sup>2</sup>	6,247 in <sup>2</sup>	5.95 m <sup>2</sup>	9,223 in <sup>2</sup>	5.10 m <sup>2</sup>	7,905 in <sup>2</sup>
Ground pressure*	43.9 kPa	6.36 psi	52.0 kPa	7.54 psi	33.5 kPa	4.86 psi	42.8 kPa	6.20 psi
<b>8</b> Drawbar height	576 mm	23 in	576 mm	23 in	626 mm	25 in	626 mm	25 in
From ground face of shoe	511 mm	20 in	511 mm	20 in	561 mm	22 in	561 mm	22 in

\* XL and XW with SU blade, LGP with S blade with no rear attachments unless otherwise specified and calculated per ISO 16754.

Standard equipment may vary. Consult your Cat dealer for details.

## POWERTRAIN

- C9.3 ACERT diesel engine
- EPA/ARB Tier 4 Interim and EU Stage IIIB certified engine with aftertreatment
- Air cleaner, precleaner with strata tube dust ejector
- Air filter with Electronic Service Ind.
- Aftercooler, Air to Air (ATAAC)
- Coolant, extended life
- Fan, sucker, hydraulic
- Final drives, three planet single reduction planetary
- Fuel priming pump, electric
- Parking brake, electronic
- Prescreener
- Radiator, aluminum bar plate
- Shift management
  - automatic directional and downshift
  - controlled throttle, load compensated
- Starting aid, ether, automatic
- Torque divider
- Transmission, electronically controlled powershift 3F/3R speeds
- Turbocharger
- Water separator

## UNDERCARRIAGE

- SystemOne
- Carrier rollers
- Clamp master link
- Equalizer bar, heavy duty
- Guards, end track guiding
- Idlers, center tread, lifetime lubricated
- Rollers, lifetime lubricated track
- Track roller frames, tubular
- Track adjusters, hydraulic
- Sprocket rim segments, replaceable

## ELECTRICAL

- Alarm, backup
- Alternator, 95 amp, brushless
- Batteries, 2 maintenance free 12V (24V system), heavy duty
- Converter, two 10 amp 12V outlets
- Connector, diagnostic
- Electric start, 24V
- Horn, forward warning

## OPERATOR ENVIRONMENT

- Air conditioner, underhood
- Armrest, adjustable
- Cab, ROPS/FOPS, sound suppressed
- Decelerator pedal
- Electro-hydraulics implement and steering controls
- Five gauge cluster (engine coolant, powertrain oil, hydraulic oil, fuel level and engine RPM display/gear display)
- Foot pads, dash
- Heater
- Hour meter, electronic
- Mirror, rearview
- Multi Velocity Program (MVP), 5-speed includes Eco Reverse
- Radio ready
- Seat, adjustable contour suspension
- Seatbelt, retractable 76 mm (3 in)
- Throttle switch, electronic
- Wipers, intermittent

## OTHER STANDARD EQUIPMENT

- CD ROM parts book
- Engine enclosures, perforated
- Front pull device
- Guards, hinged bottom
- Ground level service center with remote electrical disconnect and secondary shutdown switch
- Hood, perforated
- Hydraulics, independent steering and work tool and fan pumps
- Hydraulics, load sensing, dozer lift and tilt
- Oil cooler, hydraulic
- Product Link ready
- Radiator doors, louvered, hinged
- S·O·S<sup>SM</sup> sampling ports
- Vandalism protection allowance for fluid compartments and battery box

# D6T Optional Equipment

Optional equipment may vary. Consult your Cat dealer for details.

## POWERTRAIN

Drains, ecology, powertrain  
Fan, auto reversing  
Oil change system, powertrain  
Fuel system, fast fill  
Precleaner turbine with screen  
Thermal shield including insulated CEM  
(late 2011)

## UNDERCARRIAGE

Heavy duty undercarriage arrangements  
XL machines  
XW machines  
LGP machines  
XL VPAT machines  
XW VPAT machines  
LGP VPAT machines

### Track Pairs

(XL VPAT Roller Frame, 41 Section)  
Extreme Service (HD)  
560 mm (22 in)  
Extreme Service (SystemOne)  
560 mm (22 in)  
Extreme Service (SystemOne)  
610 mm (24 in), Offset  
Extreme Service (SystemOne)  
560 mm (22 in), Center Hole  
Extreme Service (SystemOne)  
610 mm (24 in), Offset Clipped

### Track Pairs

(XL Non-VPAT Roller Frame, 41 Section)  
Extreme Service (HD)  
560 mm (22 in)  
Extreme Service (SystemOne)  
560 mm (22 in)  
Moderate Service (SystemOne)  
610 mm (24 in)  
Moderate Service (HD)  
610 mm (24 in)  
Extreme Service (SystemOne)  
610 mm (24 in)  
Extreme Service (SystemOne)  
610 mm (24 in), Clipped  
Extreme Service (HD)  
610 mm (24 in), Non-Trapezoidal  
Extreme Service (SystemOne)  
560 mm (22 in), Center Hole  
Extreme Service (HD)  
610 mm (24 in), Trapezoidal

### Track Pairs

(XW VPAT Roller Frame, 41 Section)  
Extreme Service (SystemOne)  
610 mm, 710 mm (24 in, 28 in)  
Extreme Service (SystemOne)  
610 mm (24 in), Clipped  
Moderate Service  
790 mm (31 in), Offset,  
Non-Trapezoidal  
Moderate Service (HD)  
610 mm (24 in)  
Extreme Service (HD)  
610 mm (24 in), Non-Trapezoidal  
Moderate Service (HD)  
710 mm (28 in), Non-Trapezoidal  
Moderate Service (HD)  
710 mm (28 in), Center Hole  
Moderate Service (SystemOne)  
710 mm (28 in), Clipped

### Track Pairs

(XW Non VPAT Roller Frame, 41 Section)  
Extreme Service (SystemOne)  
610 mm (24 in)  
Extreme Service (SystemOne)  
610 mm (24 in), Clipped  
Extreme Service (HD)  
760 mm (30 in), Non-Trapezoidal  
Extreme Service (SystemOne)  
760 mm (30 in)  
Extreme Service (HD)  
610 mm (24 in), Non-Trapezoidal  
Moderate Service (SystemOne)  
710 mm (28 in)  
Extreme Service (HD)  
760 mm (30 in)  
Moderate Service (HD)  
760 mm (30 in), Non-Trapezoidal  
Extreme Service (SystemOne)  
760 mm (30 in), Center Hole

### Track Pairs

(LGP VPAT Roller Frame, 45 Section)  
Moderate Service (HD)  
790 mm (31 in), Offset  
Extreme Service (SystemOne)  
790 mm (31 in), Offset  
Moderate Service (HD)  
915 mm (36 in)  
Extreme Service (SystemOne)  
915 mm (36 in)

### Track Pairs

(LGP Non VPAT Roller Frame, 45 Section)  
Extreme Service (SystemOne)  
760 mm (30 in), Center Hole  
Extreme Service (HD)  
760 mm (30 in), Trapezoidal  
Extreme Service (SystemOne)  
915 mm (36 in), Center Hole  
Extreme Service (HD)  
915 mm (36 in), Trapezoidal  
Self-Cleaning (HD)  
990 mm (39 in)

## HYDRAULICS

Control arrangement – ripper (NON-VPAT)  
Control arrangement – ripper (VPAT)  
Control arrangement – winch  
Control arrangement – ripper/winch  
(mid-2011)  
Control arrangement – hydraulic  
implement towing (mid-2011)

## STARTERS, BATTERIES AND ALTERNATORS

Alternator, 150 amp  
Alternator, 150 amp, ducted  
Heater, engine coolant, 120V  
Starter, heavy duty



#### ELECTRICAL

Lights 6, basic  
Lights 10, premium  
Switch, disconnect, remote mounted  
(mid-2011)

#### OPERATOR ENVIRONMENT

Air conditioner, ROPS mounted  
Camera, rear vision (mid-2011)  
Canopy arrangement (OOPS) includes  
vinyl covered seat with mechanical  
suspension (mid-2011)  
Glass, dual pane and precleaner  
Handles, heavy duty  
Handles, heavy duty VPAT

#### TECHNOLOGY PRODUCTS

AccuGrade Ready

#### GUARDS

Guard, rear tractor  
Guard, final drive, clamshell  
Guard, final drive seals  
Guard, idler seals  
Heavy duty guard package  
Hitch, front  
Screen, rear cab  
Screen, rear for canopy arrangement  
(mid-2011)  
Sweeps package  
Towing device, pull-hook

#### TRACK GUIDING GUARD

##### ARRANGEMENTS (SystemOne)

Guide, track, moderate service  
Guide/guard, track, full length

##### OTHER ATTACHMENTS

Counterweights and drawbars  
Counterweight, rear  
Counterweight, rear slab  
Counterweight, additional  
Drawbar, rigid short  
Drawbar, rigid long

##### WINCH ARRANGEMENTS

PA56 winch package, standard speed  
PA56 winch package, slow speed  
Fairlead, 3 rollers  
Fourth roller

#### BLADES

VPAT XL Bulldozer  
VPAT XW Bulldozer  
VPAT LGP Bulldozer  
6SU XL  
6SU XL, Landfill  
6SU XW  
6SU XW, Landfill  
6A XL  
6A XW  
6A LGP  
6S LGP  
6S LGP, Landfill

#### GROUND ENGAGING TOOLS

Ripper, multi-shank  
Tooth, multi-shank ripper  
Tooth, straight, 1 shank  
Teeth, straight, set of 2  
Teeth, straight, set of 3

#### MISCELLANEOUS

Seal group  
Seal group – VPAT