

KOMATSU®

PC200-8 PC200LC-8

HORSEPOWER
Gross: 116 kW 155 HP @ 2000 rpm
Net: 110 kW 148 HP @ 2000 rpm

OPERATING WEIGHT
PC200-8: 19400–20010 kg
42,770–44,110 lb
PC200LC-8: 20630–21460 kg
45,480–47,310 lb

ecot3

PC
200



Photo may include optional equipment.

HYDRAULIC EXCAVATOR

LUXTON
PLANT

RENTAL

SPECIFICATIONS



ENGINE

Model Komatsu SAA6D107E-1
 Type Water-cooled, 4-cycle, direct injection
 Aspiration Turbocharged, aftercooled
 Number of cylinders 6
 Bore **107 mm** 4.21"
 Stroke **124 mm** 4.88"
 Piston displacement **6.69 ltr** 408 in³
 Horsepower:
 SAE J1995 Gross **116 kW** 155 HP
 ISO 9249 / SAE J1349 Net **110 kW** 148 HP
 Rated rpm 2000 rpm
 Fan drive method for radiator cooling Mechanical
 Governor All-speed control, electronic
 EPA Tier 3 and EU Stage 3A emission certified



HYDRAULICS

Type HydraMind (Hydraulic Mechanical Intelligence New Design) system, closed-center system with load sensing valves and pressure compensated valves
 Number of selectable working modes 5
 Main pump:
 Type Variable displacement piston type
 Pumps for Boom, arm, bucket, swing, and travel circuits
 Maximum flow **439 ltr/min** 116 U.S. gal/min
 Supply for control circuit Self-reducing valve
 Hydraulic motors:
 Travel 2 x axial piston motor with parking brake
 Swing 1 x axial piston motor with swing holding brake
 Relief valve setting:
 Implement circuits **37.3 MPa** 380 kgf/cm² 5,400 psi
 Travel circuit **37.3 MPa** 380 kgf/cm² 5,400 psi
 Swing circuit **28.9 MPa** 295 kgf/cm² 4,190 psi
 Pilot circuit **3.2 MPa** 33 kgf/cm² 470 psi
 Hydraulic cylinders:
 (Number of cylinders – bore x stroke x rod diameter)
 Boom **2–120 mm x 1334 mm x 85 mm** 4.7" x 52.5" x 3.3"
 Arm **1–135 mm x 1490 mm x 95 mm** 5.3" x 58.7" x 3.7"
 Bucket: for **2.41 m** 7'11" and **2.93 m** 9'7" Arm
 1–115 mm x 1120 mm x 80 mm 4.5" x 44.1" x 3.2"
 for **1.84 m** 6'0" Arm
 1–125 mm x 1110 mm x 85 mm 4.9" x 43.7" x 3.3"



DRIVES AND BRAKES

Steering control Two levers with pedals
 Drive method Hydrostatic
 Maximum drawbar pull **178 kN** 18200 kg 40,120 lb
 Gradeability 70%, 35°
 Maximum travel speed: High **5.5 km/h** 3.4 mph
 (Auto-Shift) Mid **4.1 km/h** 2.5 mph
 (Auto-Shift) Low **3.0 km/h** 1.9 mph
 Service brake Hydraulic lock
 Parking brake Mechanical disc brake



SWING SYSTEM

Drive method Hydrostatic
 Swing reduction Planetary gear
 Swing circle lubrication Grease-bathed
 Service brake Hydraulic lock
 Holding brake/Swing lock Mechanical disc brake
 Swing speed 12.4 rpm



UNDERCARRIAGE

Center frame X-frame
 Track frame Box-section
 Seal of track Sealed track
 Track adjuster Hydraulic
 Number of shoes (each side):
 PC200-8 45
 PC200LC-8 49
 Number of carrier rollers 2 each side
 Number of track rollers (each side):
 PC200-8 7
 PC200LC-8 9



COOLANT AND LUBRICANT CAPACITY (REFILLING)

Fuel tank **400 ltr** 105.7 U.S. gal
 Coolant **20.4 ltr** 5.4 U.S. gal
 Engine **23.1 ltr** 6.1 U.S. gal
 Final drive, each side **3.3 ltr** 0.9 U.S. gal
 Swing drive **6.6 ltr** 1.7 U.S. gal
 Hydraulic tank **135 ltr** 35.7 U.S. gal



OPERATING WEIGHT (APPROXIMATE)

Operating weight including **5700 mm** 18'8" one-piece boom, **2925 mm** 9'7" arm, SAE heaped **0.80 m³** 1.05 yd³ backhoe bucket, rated capacity of lubricants, coolant, full fuel tank, operator, and standard equipment.

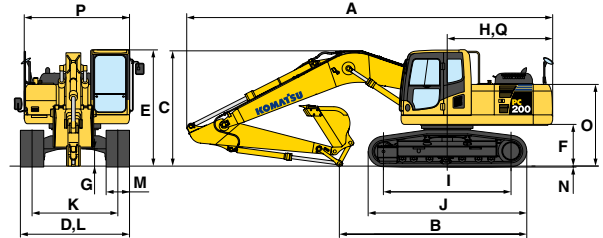
Shoes	PC200-8		PC200LC-8	
	Operating Weight	Ground Pressure	Operating Weight	Ground Pressure
500 mm 20"	19400 kg 42,770 lb	53.0 kPa 0.54 kgf/cm ² 7.68 psi	—	—
600 mm 24"	19500 kg 42,990 lb	45.1 kPa 0.46 kgf/cm ² 6.54 psi	20630 kg 45,480 lb	43.1 kPa 0.44 kgf/cm ² 6.26 psi
700 mm 28"	19750 kg 43,540 lb	39.2 kPa 0.40 kgf/cm ² 5.69 psi	20900 kg 46,080 lb	37.3 kPa 0.38 kgf/cm ² 5.40 psi
800 mm 31.5"	20010 kg 44,110 lb	34.3 kPa 0.35 kgf/cm ² 4.98 psi	21180 kg 46,690 lb	33.3 kPa 0.34 kgf/cm ² 4.83 psi
900 mm 35.5"	—	—	21460 kg 47,310 lb	29.4 kPa 0.30 kgf/cm ² 4.27 psi



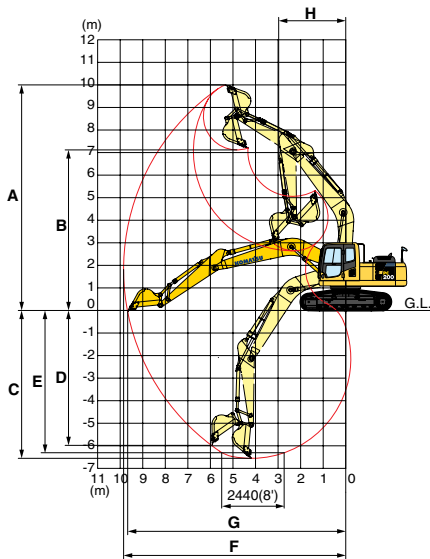
DIMENSIONS

	Arm Length	1840 mm 6'0"	2410 mm 7'11"	2925 mm 9'7"
A	Overall length	9480 mm 31'1"	9495 mm 31'2"	9425 mm 30'11"
B	Length on ground (transport): PC200-8 PC200LC-8	6270 mm 20'7" 6455 mm 21'2"	5700 mm 18'8" 5885 mm 19'4"	4815 mm 15'10" 5000 mm 16'5"
C	Overall height (to top of boom)	2985 mm 9'10"	3190 mm 10'6"	2970 mm 9'9"

		PC200-8	PC200LC-8
D	Overall width	2800 mm 9'2"	3080 mm 10'1"
E	Overall height (to top of cab)	3040 mm 10'0"	3040 mm 10'0"
F	Ground clearance, counterweight	1085 mm 3'7"	1085 mm 3'7"
G	Ground clearance (minimum)	440 mm 1'5"	440 mm 1'5"
H	Tail swing radius	2750 mm 9'0"	2750 mm 9'0"
I	Track length on ground	3275 mm 10'9"	3655 mm 12'0"
J	Track length	4070 mm 13'4"	4450 mm 14'7"
K	Track gauge	2200 mm 7'3"	2380 mm 7'10"
L	Width of crawler	2800 mm 9'2"	3080 mm 10'1"
M	Shoe width	600 mm 24"	700 mm 28"
N	Grouser height	26 mm 1.0"	26 mm 1.0"
O	Machine cab height	2095 mm 6'10"	2095 mm 6'10"
P	Machine cab width	2710 mm 8'11"	2710 mm 8'11"
Q	Distance, swing center to rear end	2710 mm 8'11"	2710 mm 8'11"



WORKING RANGE



	Arm	1840 mm 6'0"	2410 mm 7'11"	2925 mm 9'7"
A	Max. digging height	9500 mm 31'2"	9800 mm 32'2"	10000 mm 32'10"
B	Max. dumping height	6630 mm 21'9"	6890 mm 22'7"	7110 mm 23'4"
C	Max. digging depth	5380 mm 17'8"	6095 mm 20'0"	6620 mm 21'9"
D	Max. vertical wall digging depth	4630 mm 15'2"	5430 mm 17'10"	5980 mm 19'7"
E	Max. digging depth of cut for 8' level	5130 mm 16'0"	5780 mm 19'0"	6370 mm 20'11"
F	Max. digging reach	8850 mm 29'1"	9380 mm 30'9"	9875 mm 32'5"
G	Max. digging reach at ground level	8660 mm 28'5"	9190 mm 30'2"	9700 mm 31'10"
H	Min. swing radius	3010 mm 9'11"	3090 mm 10'2"	3040 mm 10'0"
SAE rating	Bucket digging force at power max.	157 kN 16000 kgf/35,270 lb	138 kN 14100 kgf/31,080 lb	138 kN 14100 kgf/31,080 lb
	Arm crowd force at power max.	139 kN 14200 kgf/31,300 lb	124 kN 12600 kgf/27,780 lb	101 kN 10300 kgf/22,710 lb
ISO rating	Bucket digging force at power max.	177 kN 18000 kgf/39,680 lb	149 kN 15200 kgf/33,510 lb	149 kN 15200 kgf/33,510 lb
	Arm crowd force at power max.	145 kN 14800 kgf/32,630 lb	127 kN 13000 kgf/28,660 lb	108 kN 11000 kgf/24,250 lb



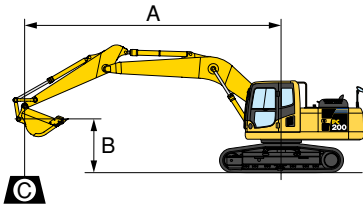
BACKHOE BUCKET, ARM, AND BOOM COMBINATION

Bucket Capacity (heaped)		Width		Weight		Number of Teeth	Arm Length		
SAE, PCSA	CECE	Without Side Cutters	With Side Cutters	With Side Cutters			1.84 m 6'0"	2.41 m 7'11"	2.93 m 9'7"
0.50 m ³ 0.65 yd ³	0.45 m ³ 0.59 yd ³	750 mm 29.5"	875 mm 34.4"	478 kg 1,050 lb	3	○	○	○	
0.80 m ³ 1.05 yd ³	0.70 m ³ 0.92 yd ³	1045 mm 41.1"	1170 mm 46.1"	635 kg 1,400 lb	5	○	○	○	
0.93 m ³ 1.22 yd ³	0.80 m ³ 1.05 yd ³	1200 mm 47.2"	1325 mm 52.2"	696 kg 1,530 lb	5	□	□	●	
1.05 m ³ 1.37 yd ³	0.90 m ³ 1.18 yd ³	1330 mm 52.4"	1455 mm 57.3"	757 kg 1,670 lb	6	□	□	X	
1.17 m ³ 1.53 yd ³	1.00 m ³ 1.31 yd ³	1450 mm 57.1"	—	940 kg 2,070 lb	6	●	●	X	

○: General purpose use, density up to 1.8 ton/m³ 1.52 U.S. ton/yd³ ●: Light duty work, density up to 1.2 ton/m³ 1.01 U.S. ton/yd³
 □: General purpose use, density up to 1.5 ton/m³ 1.26 U.S. ton/yd³ X: Not usable



LIFTING CAPACITY WITH LIFTING MODE



- A: Reach from swing center
- B: Bucket hook height
- C: Lifting capacity
- Cf: Rating over front
- Cs: Rating over side
- ☉: Rating at maximum reach

Conditions:

- 5700 mm 18'8" one-piece boom
- 0.8 m³ 1.05 yd³ SAE heaped bucket
- Shoe width:
—PC200-8 600 mm 24" triple grouser

PC200-8		Arm: 1840 mm 6'0"				Bucket: 0.8 m ³ 1.05 yd ³ SAE heaped				Shoe: 600 mm 24" triple grouser			
B	A	☉ MAX		7.6 m 25'		6.1 m 20'		4.6 m 15'		3.0 m 10'		1.5 m 5'	
		Cf	Cs	Cf	Cs	Cf	Cs	Cf	Cs	Cf	Cs	Cf	Cs
7.6 m 25'		*4800 kg *10,600 lb	*4800 kg *10,600 lb					*5500 kg *12,100 lb	*5500 kg *12,100 lb				
6.1 m 20'		*4450 kg *9,900 lb	3450 kg 7,600 lb			*5450 kg *12,100 lb	3800 kg 8,300 lb	*5700 kg *12,600 lb	*5700 kg *12,600 lb				
4.6 m 15'		4200 kg 9,300 lb	2700 kg 6,000 lb			5650 kg 12,500 lb	3700 kg 8,100 lb	*7000 kg *15,400 lb	6000 kg 13,200 lb	*9850 kg *21,800 lb	*9850 kg *21,800 lb		
3.0 m 10'		3750 kg 8,300 lb	2350 kg 5,200 lb			5450 kg 12,000 lb	3500 kg 7,700 lb	8600 kg 19,000 lb	5350 kg 11,800 lb				
1.5 m 5'		3600 kg 8,000 lb	2250 kg 5,000 lb	3650 kg 8,100 lb	2300 kg 5,000 lb	5250 kg 11,500 lb	3300 kg 7,300 lb	8250 kg 18,200 lb	5000 kg 11,100 lb				
0 m 0'		3750 kg 8,200 lb	2300 kg 5,100 lb			5100 kg 11,200 lb	3150 kg 7,000 lb	8050 kg 17,700 lb	4850 kg 10,700 lb				
-1.5 m -5'		4200 kg 9,300 lb	2650 kg 5,800 lb			5050 kg 11,200 lb	3150 kg 6,900 lb	8050 kg 17,700 lb	4850 kg 10,700 lb	*13350 kg *29,400 lb	9500 kg 21,000 lb		
-3.0 m -10'		5500 kg 12,100 lb	3450 kg 7,600 lb					8200 kg 18,100 lb	5000 kg 11,000 lb	*13200 kg *29,100 lb	9800 kg 21,600 lb		

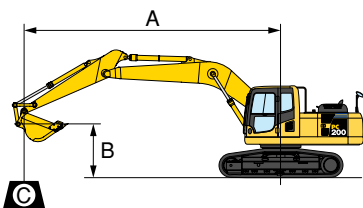
PC200-8		Arm: 2410 mm 7'11"				Bucket: 0.8 m ³ 1.05 yd ³ SAE heaped				Shoe: 600 mm 24" triple grouser			
B	A	☉ MAX		7.6 m 25'		6.1 m 20'		4.6 m 15'		3.0 m 10'		1.5 m 5'	
		Cf	Cs	Cf	Cs	Cf	Cs	Cf	Cs	Cf	Cs	Cf	Cs
7.6 m 25'		*4300 kg *9,500 lb	4300 kg 9,400 lb										
6.1 m 20'		*4100 kg *9,000 lb	3000 kg 6,600 lb			*4850 kg *10,700 lb	3950 kg 8,700 lb						
4.6 m 15'		3800 kg 8,400 lb	2450 kg 5,400 lb	3900 kg 8,600 lb	2500 kg 5,600 lb	*5400 kg *11,900 lb	3800 kg 8,400 lb	*6200 kg *13,600 lb	*6200 kg *13,600 lb				
3.0 m 10'		3400 kg 7,500 lb	2150 kg 4,800 lb	3800 kg 8,400 lb	2450 kg 5,400 lb	5600 kg 12,300 lb	3600 kg 8,000 lb	*8100 kg *17,800 lb	5700 kg 12,600 lb				
1.5 m 5'		3300 kg 7,300 lb	2050 kg 4,600 lb	3700 kg 8,200 lb	2350 kg 5,200 lb	5350 kg 11,800 lb	3400 kg 7,500 lb	8450 kg 18,700 lb	5250 kg 11,500 lb				
0 m 0'		3400 kg 7,500 lb	2100 kg 4,700 lb	3650 kg 8,000 lb	2250 kg 5,000 lb	5150 kg 11,400 lb	3250 kg 7,100 lb	8150 kg 18,000 lb	4950 kg 11,000 lb	*7350 kg *16,200 lb	*7350 kg *16,200 lb		
-1.5 m -5'		3750 kg 8,300 lb	2350 kg 5,200 lb			5100 kg 11,200 lb	3150 kg 7,000 lb	8100 kg 17,800 lb	4900 kg 10,800 lb	*12250 kg *27,000 lb	9500 kg 21,000 lb	*7650 kg *16,900 lb	*7650 kg *16,900 lb
-3.0 m -10'		4650 kg 10,200 lb	2900 kg 6,400 lb			5150 kg 11,400 lb	3200 kg 7,100 lb	8200 kg 18,000 lb	4950 kg 11,000 lb	*14700 kg *32,400 lb	9750 kg 21,500 lb	*12650 kg *27,900 lb	*12650 kg *27,900 lb
-4.6 m -15'		*7200 kg *15,900 lb	4550 kg 10,000 lb					*8100 kg *17,800 lb	5200 kg 11,500 lb	*11600 kg *25,500 lb	10150 kg 22,400 lb		

PC200-8		Arm: 2925 mm 9'7"				Bucket: 0.8 m ³ 1.05 yd ³ SAE heaped				Shoe: 600 mm 24" triple grouser			
B	A	☉ MAX		7.6 m 25'		6.1 m 20'		4.6 m 15'		3.0 m 10'		1.5 m 5'	
		Cf	Cs	Cf	Cs	Cf	Cs	Cf	Cs	Cf	Cs	Cf	Cs
7.6 m 25'		*2750 kg *6,100 lb	*2750 kg *6,100 lb			*3800 kg *8,300 lb	*3800 kg *8,300 lb						
6.1 m 20'		*2600 kg *5,800 lb	*2600 kg *5,800 lb			*4300 kg *9,500 lb	4050 kg 8,900 lb						
4.6 m 15'		*2650 kg *5,800 lb	2150 kg 4,800 lb	3950 kg 8,800 lb	2600 kg 5,700 lb	*4900 kg *10,800 lb	3900 kg 8,600 lb						
3.0 m 10'		*2800 kg *6,100 lb	1950 kg 4,300 lb	3850 kg 8,500 lb	2500 kg 5,500 lb	5650 kg 12,500 lb	3700 kg 8,100 lb	*7350 kg *16,200 lb	5850 kg 12,900 lb	*11350 kg *25,000 lb	*11350 kg *25,000 lb		
1.5 m 5'		3000 kg 6,600 lb	1850 kg 4,100 lb	3750 kg 8,300 lb	2350 kg 5,200 lb	5400 kg 11,900 lb	3450 kg 7,600 lb	8600 kg 19,000 lb	5350 kg 11,800 lb	*7500 kg *16,500 lb	*7500 kg *16,500 lb		
0 m 0'		3050 kg 6,700 lb	1900 kg 4,200 lb	3650 kg 8,000 lb	2300 kg 5,000 lb	5200 kg 11,500 lb	3250 kg 7,200 lb	8250 kg 18,200 lb	5050 kg 11,100 lb	*8000 kg *17,700 lb	*8000 kg *17,700 lb		
-1.5 m -5'		3350 kg 7,400 lb	2050 kg 4,600 lb	3600 kg 7,900 lb	2250 kg 4,900 lb	5100 kg 11,200 lb	3150 kg 7,000 lb	8100 kg 17,900 lb	4900 kg 10,800 lb	*11200 kg *24,700 lb	9500 kg 20,900 lb	*6800 kg *15,000 lb	*6800 kg *15,000 lb
-3.0 m -10'		4000 kg 8,800 lb	2500 kg 5,500 lb			5100 kg 11,200 lb	3150 kg 7,000 lb	8100 kg 17,900 lb	4950 kg 10,900 lb	*15600 kg *34,400 lb	9650 kg 21,300 lb	*10550 kg *23,200 lb	*10550 kg *23,200 lb
-4.6 m -15'		5650 kg 12,500 lb	3550 kg 7,900 lb					8300 kg 18,300 lb	5100 kg 11,200 lb	*13050 kg *28,800 lb	10000 kg 22,000 lb		

* Load is limited by hydraulic capacity rather than tipping. Ratings are based on SAE Standard No. J1097. Rated loads do not exceed 87% of hydraulic lift capacity or 75% of tipping load.



LIFTING CAPACITY WITH LIFTING MODE



- A: Reach from swing center
- B: Bucket hook height
- C: Lifting capacity
- Cf: Rating over front
- Cs: Rating over side
- ☉: Rating at maximum reach

Conditions:

- 5700 mm 18'8" one-piece boom
- 0.8 m³ 1.05 yd³ SAE heaped bucket
- Shoe width:
—PC200LC-8 700 mm 28" triple grouser

PC200LC-8		Arm: 1840 mm 6'0"				Bucket: 0.8 m ³ 1.05 yd ³ SAE heaped				Shoe: 700 mm 28" triple grouser			
B	A	☉ MAX		7.6 m 25'		6.1 m 20'		4.6 m 15'		3.0 m 10'		1.5 m 5'	
		Cf	Cs	Cf	Cs	Cf	Cs	Cf	Cs	Cf	Cs	Cf	Cs
7.6 m 25'		*4800 kg *10,600 lb	*4800 kg *10,600 lb					*5500 kg *12,100 lb	*5500 kg *12,100 lb				
6.1 m 20'		*4450 kg *9,900 lb	3950 kg 8,800 lb			*5450 kg *12,100 lb	4350 kg 9,600 lb	*5700 kg *12,600 lb	*5700 kg *12,600 lb				
4.6 m 15'		*4500 kg *9,900 lb	3150 kg 7,000 lb			*5900 kg *13,000 lb	4250 kg 9,400 lb	*7000 kg *15,400 lb	6900 kg 15,200 lb	*9850 kg *21,800 lb	*9850 kg *21,800 lb		
3.0 m 10'		*4650 kg *10,200 lb	2800 kg 6,200 lb			*6700 kg *14,800 lb	4050 kg 9,000 lb	*8700 kg *19,200 lb	6250 kg 13,700 lb				
1.5 m 5'		4500 kg 9,900 lb	2650 kg 5,900 lb	4550 kg 10,000 lb	2700 kg 6,000 lb	6500 kg 14,300 lb	3850 kg 8,500 lb	*10350 kg *22,800 lb	5900 kg 13,000 lb				
0 m 0'		4650 kg 10,300 lb	2750 kg 6,100 lb			6350 kg 14,000 lb	3750 kg 8,200 lb	10200 kg 22,500 lb	5700 kg 12,600 lb				
-1.5 m -5'		5250 kg 11,600 lb	3100 kg 6,900 lb			6350 kg 14,000 lb	3700 kg 8,200 lb	10200 kg 22,500 lb	5700 kg 12,600 lb	*13350 kg *29,400 lb	11350 kg 25,100 lb		
-3.0 m -10'		6850 kg 15,100 lb	4050 kg 8,900 lb					*9550 kg *21,100 lb	5900 kg 13,000 lb	*13200 kg *29,100 lb	11700 kg 25,800 lb		

PC200LC-8		Arm: 2410 mm 7'11"				Bucket: 0.8 m ³ 1.05 yd ³ SAE heaped				Shoe: 700 mm 28" triple grouser			
B	A	☉ MAX		7.6 m 25'		6.1 m 20'		4.6 m 15'		3.0 m 10'		1.5 m 5'	
		Cf	Cs	Cf	Cs	Cf	Cs	Cf	Cs	Cf	Cs	Cf	Cs
7.6 m 25'		*4300 kg *9,500 lb	*4300 kg *9,500 lb										
6.1 m 20'		*4100 kg *9,000 lb	3500 kg 7,700 lb			*4850 kg *10,700 lb	4500 kg 10,000 lb						
4.6 m 15'		*4150 kg *9,100 lb	2850 kg 6,300 lb	*4700 kg *10,400 lb	2950 kg 6,500 lb	*5400 kg *11,900 lb	4400 kg 9,700 lb	*6200 kg *13,600 lb	*6200 kg *13,600 lb				
3.0 m 10'		*4250 kg *9,300 lb	2550 kg 5,600 lb	4700 kg 10,400 lb	2850 kg 6,300 lb	*6300 kg *13,900 lb	4200 kg 9,200 lb	*8100 kg *17,800 lb	6600 kg 14,600 lb				
1.5 m 5'		4100 kg 9,000 lb	2450 kg 5,400 lb	4600 kg 10,200 lb	2750 kg 6,100 lb	*6600 kg *14,500 lb	3950 kg 8,700 lb	*9850 kg *21,800 lb	6100 kg 13,500 lb				
0 m 0'		4200 kg 9,300 lb	2500 kg 5,500 lb	4550 kg 10,000 lb	2700 kg 5,900 lb	6450 kg 14,200 lb	3800 kg 8,400 lb	10350 kg 22,800 lb	5850 kg 12,900 lb	*7350 kg *16,200 lb	*7350 kg *16,200 lb		
-1.5 m -5'		4650 kg 10,300 lb	2750 kg 6,100 lb			6350 kg 14,000 lb	3750 kg 8,300 lb	10250 kg 22,600 lb	5800 kg 12,700 lb	*12250 kg *27,000 lb	11400 kg 25,100 lb	*7650 kg *16,900 lb	*7650 kg *16,900 lb
-3.0 m -10'		5750 kg 12,700 lb	3450 kg 7,600 lb			6400 kg 14,200 lb	3800 kg 8,400 lb	*10250 kg *22,600 lb	5850 kg 12,900 lb	*14700 kg *32,400 lb	11600 kg 25,600 lb	*12650 kg *27,900 lb	*12650 kg *27,900 lb
-4.6 m -15'		*7200 kg *15,900 lb	5300 kg 11,700 lb					*8100 kg *17,800 lb	6100 kg 13,500 lb	*11600 kg *25,500 lb	*11600 kg *25,500 lb		

PC200LC-8		Arm: 2925 mm 9'7"				Bucket: 0.8 m ³ 1.05 yd ³ SAE heaped				Shoe: 700 mm 28" triple grouser			
B	A	☉ MAX		7.6 m 25'		6.1 m 20'		4.6 m 15'		3.0 m 10'		1.5 m 5'	
		Cf	Cs	Cf	Cs	Cf	Cs	Cf	Cs	Cf	Cs	Cf	Cs
7.6 m 25'		*2750 kg *6,100 lb	*2750 kg *6,100 lb			*3800 kg *8,300 lb	*3800 kg *8,300 lb						
6.1 m 20'		*2600 kg *5,800 lb	*2600 kg *5,800 lb			*4300 kg *9,500 lb	*4300 kg *9,500 lb						
4.6 m 15'		*2650 kg *5,800 lb	2550 kg 5,600 lb	*4650 kg *10,300 lb	3000 kg 6,600 lb	*4900 kg *10,800 lb	4500 kg 9,900 lb						
3.0 m 10'		*2800 kg *6,100 lb	2300 kg 5,100 lb	4750 kg 10,500 lb	2900 kg 6,400 lb	*5850 kg *12,900 lb	4250 kg 9,400 lb	*7350 kg *16,200 lb	6750 kg 14,900 lb	*11350 kg *25,000 lb	*11350 kg *25,000 lb		
1.5 m 5'		*3050 kg *6,700 lb	2200 kg 4,900 lb	4650 kg 10,200 lb	2800 kg 6,200 lb	6700 kg 14,700 lb	4000 kg 8,900 lb	*9300 kg *20,500 lb	6250 kg 13,800 lb	*7500 kg *16,500 lb	*7500 kg *16,500 lb		
0 m 0'		*3500 kg *7,800 lb	2250 kg 5,000 lb	4550 kg 10,000 lb	2700 kg 5,900 lb	6450 kg 14,300 lb	3850 kg 8,400 lb	10450 kg 23,000 lb	5900 kg 13,000 lb	*8000 kg *17,700 lb	*8000 kg *17,700 lb		
-1.5 m -5'		4150 kg 9,200 lb	2450 kg 5,400 lb	4500 kg 9,900 lb	2650 kg 5,800 lb	6350 kg 14,000 lb	3750 kg 8,200 lb	*10250 kg *22,700 lb	5800 kg 12,700 lb	*11200 kg *24,700 lb	*11200 kg *24,700 lb	*6800 kg *15,000 lb	*6800 kg *15,000 lb
-3.0 m -10'		4950 kg 11,000 lb	2950 kg 6,500 lb			6350 kg 14,000 lb	3750 kg 8,200 lb	10300 kg 22,700 lb	5800 kg 12,800 lb	*15600 kg *34,400 lb	11500 kg 25,400 lb	*10550 kg *23,200 lb	*10550 kg *23,200 lb
-4.6 m -15'		*6750 kg *14,900 lb	4150 kg 9,200 lb					*9050 kg *20,000 lb	6000 kg 13,200 lb	*13050 kg *28,800 lb	11900 kg 26,200 lb		

* Load is limited by hydraulic capacity rather than tipping. Ratings are based on SAE Standard No. J1097. Rated loads do not exceed 87% of hydraulic lift capacity or 75% of tipping load.



STANDARD EQUIPMENT

- Alternator, 35 Ampere, 24 V
- Anti-slip plates
- Auto-decel
- Automatic engine warm-up system
- Batteries, 110 Ah/2 x 12 V
- Boom holding valve
- Cab, OPG top guard level 2 capable with optional bolt-on top guard
- Counterweight
- Dry type air cleaner, double element
- Electric horn
- EMMS monitoring system
- Engine, Komatsu SAA6D107E-1
- Engine overheat prevention system
- Fan guard structure
- Hydraulic track adjusters (each side)
- Multi-function color monitor
- Power maximizing system
- PPC hydraulic control system
- Radiator and oil cooler dust proof net
- Rear reflector
- Rearview mirrors (RH, LH, rear, sidewise)
- Starting motor, 4.5 kW/24 V x 1
- Suction fan
- Track guiding guard, center section
- Track roller
 - PC200-8, 7 each side
 - PC200LC-8, 9 each side
- Track shoe
 - PC200-8, **600 mm** 24" triple grouser
 - PC200LC-8, **700 mm** 28" triple grouser
- Travel alarm
- Working light, 2 (boom and RH)
- Working mode selection system



OPTIONAL EQUIPMENT

- Additional filter system for poor-quality fuel
- Air conditioner with defroster
- Alternator, 60 Ampere, 24 V
- Arms
 - 2925 mm** 9'7" arm assembly
 - 2410 mm** 7'11" arm assembly
 - 1840 mm** 6'0" arm assembly
- Batteries, large capacity
- Bolt-on top guard, [Operator Protective Guards level 2]
- Boom, **5700 mm** 18'8"
- Cab accessories
 - Rain visor
 - Sun visor
- Cab front guard
 - Full height guard
 - Half height guard
- Heater with defroster
- Long lubricating intervals for work equipment bushing (500 hours)
- Rear view monitoring system
- Seat belt, retractable
- Seat, suspension
- Service valve
- Shoes, triple grouser
 - PC200-8: **500 mm** 20", **700 mm** 28", **800 mm** 31.5"
 - PC200LC-8: **600 mm** 24", **800 mm** 31.5", **900 mm** 35.5"
- Track frame undercover
- Track roller guards (full length)
- Working lights
 - 2 on cab
 - 1 on counterweight



SPECIAL PURPOSE BUCKET

- **Ditch cleaning bucket**
 - Capacity
 - SAE heaped **0.80 m³** 1.05 yd³
 - CECE heaped **0.70 m³** 0.92 yd³
 - Width **1800 mm** 70.9"
- **Trapezoidal bucket** is ideal for digging ditches and for drainage works
 - Capacity
 - SAE heaped **0.7 m³** 0.92 yd³
 - CECE heaped **0.5 m³** 0.65 yd³
- **Slope finishing bucket** for scraping slopes of banks
 - Capacity
 - SAE heaped **0.40 m³** 0.52 yd³
 - CECE heaped **0.35 m³** 0.46 yd³
 - Width **2000 mm** 78.7"
- **Ripper bucket** for hard and rock ground
 - Capacity
 - SAE heaped **0.62 m³** 0.81 yd³
 - CECE heaped **0.56 m³** 0.73 yd³
 - Width **990 mm** 39.0"
- **Single-shank ripper** and **three-shank ripper** are recommended for rock-digging and crushing, hard soil digging, pavement removal works, etc.

KOMATSU®