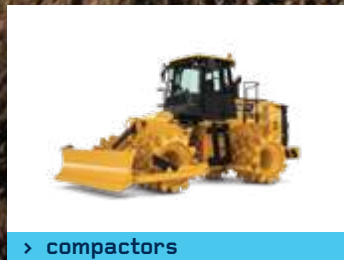


**LUXTON
PLANT**
RENTAL



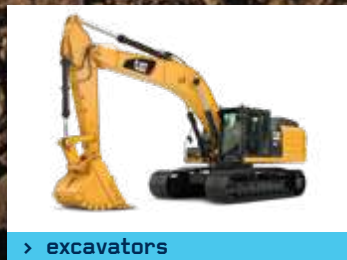
> graders



> compactors



> water trucks



> excavators

FULL RANGE OF EQUIPMENT AT
luxtonplant.com.au



1300 LUXTON (589 866)



> excavators 1



> dozers 3



> artic dump trucks 5



> graders 2



> compactors 4



> wheel loaders 6

- > Australian owned by the Luxton family for over 40 years
- > Luxton Plant have a fully accredited management system to the following standards.
 - Quality Management Systems AS/NZS ISO 9001
 - Safety Management Systems AS/NZS 4801
 - Environmental Management Systems AS/NZS ISO 14001
 This management system is independently audited by Bureau Veritas
- > Servicing major contractors, councils and government departments throughout Victoria, NSW and South Australia
- > Excavators, 1.7-50 ton with ROPS cabins, hose burst valves, standard & tilt hitches, rock hammers, rippers, sorting buckets & trench buckets.
- > Quality low hour and new plant of all types
- > All loaders over 4 metres fitted with Loadrite scales, rear cameras and Crane valves fitted on all tool carriers
- > Hand rails to all excavators over 14 tonnes
- > ROPS cabins available on all excavators, and selected water trucks
- > Rear cameras available on excavators over 20 ton and selected water carts
- > GPS systems from Trimble and Topcon
- > Branches at Melbourne, Echuca, Bendigo and Mildura
- > PROLEC Craning system available on Caterpillar 336 – Allows lifts up to 15 tons



SAFETY

Our top priority on everything we do for you



TRUSTED

Delivering dependable service for over 40 years



QUALITY ASSURANCE

Achieving Bureau Veritas standards for QMS, EMS and OH&S



> tracked loader 7



> dual view dumper 9



> water trucks 11



> tool carrier 8



> self-propelled rollers 10



> compact equipment 12

1. EXCAVATORS

- 1.7 - 8 TON
- 12 - 14 TON
- 20 - 22 TON^②
- 30 - 36 TON^①
- 40 - 50 TON^②
- ROCK HAMMERS, RIPPERS AND TRENCH BUCKETS
- TILT HITCH
- SHAKER BUCKET
- COMPACTION WHEELS

2. GRADERS

- CAT 12M VHP^②
- CAT 140M VHP^②

3. DOZER

- D6T^②

4. COMPACTOR

- CAT 815K^②

5. ARTIC DUMP TRUCKS

- VOLVO A30G
- BELL B30E^③
- CAT 745^③

6. WHEEL LOADERS

- CAT 930K
- CAT 966M/WA470-8^④
- CAT 972M^④
- CAT 980K/M^④
- CAT 982M^④
- KOMATSU WA500-8YL^④

7. TRACKED LOADER

- CAT 259D3
- AVAILABLE WITH 4/1 BUCKET, PALLET FORKS & SMUDGER BAR

8. TOOL CARRIER

- CAT 930K

9. DUAL VIEW DUMPER

- WACKER NEUSON DV90

10. SELF PROPELLED ROLLERS

- 7 - 20 TON SMOOTH / PADFOOT
- 12 - 24 TON MULTI TYRES
- 1.7 - 3 TWIN DRUMS

11. WATER TRUCKS

- ON ROAD 7,000 - 20,000 LITRES
- OFF ROAD 35,000 LITRES

12. COMPACT EQUIPMENT

- KUBOTA U17 - 1.7 TON WITH TRAILER & RANGE OF BUCKETS
- BOMAG BW100 - 1.7 TON TWIN DRUM WITH TRAILER

① PROLEC WEIGHING SYSTEM ON CAT 336DL – LIFT UP TO 15 TONS
 ② GPS SYSTEMS AVAILABLE ON THESE MACHINES
 ③ INCLINOMETER & PAYLOAD SYSTEMS
 ④ LOADRITE SCALES FITTED





Head Office / Melbourne:

5 Advantage Drive
Dandenong South 3164

Echuca Office:

107-113 Northern Hwy
Echuca 3564

Bendigo Office:

234 Woodward Road
Golden Square 3551

Mildura Office:

18-24 Seventh Street East

**LEADERS
— IN —
TECHNOLOGY
& SAFETY**

luxtonplant.com.au
1300 LUXTON (589 866)

AS/NZS ISO 9001
AS/NZS 4801
AS/NZS ISO 14001
BUREAU VERITAS
Certification

