



# 980H

Wheel Loader



#### Cat® C15 Diesel Engine with ACERT™ Technology

Gross Power (SAE J1995)	261 kW/355 hp
Net Power (ISO 9249) at 1800 rpm	237 kW/322 hp
Bucket Capacity	4.5 to 6.1 m <sup>3</sup>
Operating Weight	31 000 to 33 300 kg

## Engine

Cat C15 with ACERT Technology	
Gross Power	261 kW/355 hp
Net Power at 1800 rpm	
ISO 9249	237 kW/322 hp
80/1269/EEC	237 kW/322 hp
Peak Torque (net) at 1200 rpm	1615 Nm
Total Torque Rise	28%
Bore	137 mm
Stroke	172 mm
Displacement	15.2 liter

- All engine horsepower (hp) are metric including front page.
- EU Stage IIIA compliant
- Rating for net power advertised based on power available when the engine is equipped with alternator, air cleaner, muffler and on-demand hydraulic fan drive at maximum fan speed.

## Operating Specifications

Operating Weight	31 170 kg
Static Tipping Load, Full Turn	20 780 kg
Breakout Force	212 kN
Bucket Capacities	4.5 to 6.1 m <sup>3</sup>

- Operating weight with 5.7 m<sup>3</sup> general excavation bucket and bolt-on cutting edge.

## Axles

Front	Fixed
Rear	Oscillating $\pm 13^\circ$
Maximum Single-Wheel Rise and Fall	550 mm

## Sound

- The operator sound pressure level measured according to the procedures specified in ISO 6396:1998 is 75 dB(A) for the cab offered by Caterpillar, when properly installed, maintained and tested with the doors and windows closed.
- Hearing protection may be needed when operating with an open operator station and cab (when not properly maintained or doors/windows open) for extended periods or in noisy environments.
- The European Union 2005/88/EC labeled spectator sound power level is 108 dB(A).

## Hydraulic System

Implement System	
Pump Output	464 l/min
Relief lift and tilt valve setting	207 bar
Hydraulic Cycle Times	seconds
Raise	6
Dump	2
Lower, Empty, Float Down	3
Total	11

- Implement system, gear-type pump (rated at 2100 rpm and 69 bar)
- Cycle times with rated payload

## Service Refill Capacities

	Liters
Fuel Tank	479
Cooling System	83
Crankcase	34
Transmission	62
Differentials and Final Drives	
Front	87
Rear	87
Hydraulic System (including tank)	250
Hydraulic Tank	125

## ROPS/FOPS

- Caterpillar cab with integrated Rollover Protective Structure (ROPS) is standard in Europe.
- Rollover Protective Structure ROPS meets ISO 3471:1994 criteria.
- Falling Objects Protective Structure (FOPS) meets ISO 3449:1992 Level II criteria.

## Brakes

Meet ISO 3450:1996 standard.

## Transmission

Forward	km/h
1	7
2	12
3	21
4	36
Reverse	
1	8
2	14
3	24
4	41

- Maximum travel speeds (29.5–25 tires)

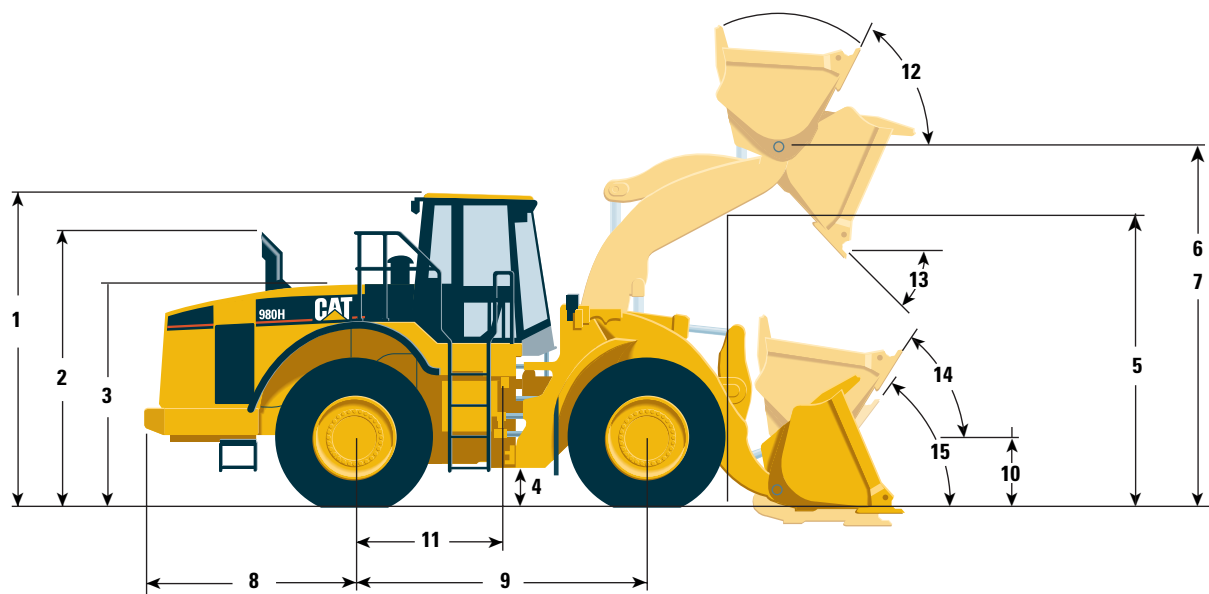
## Tires

29.5 R 25, L-3 (XHA)  
29.5 R 25, L-5 (XLDD2A)  
29.5 R 25, L-5 (XMINE2)  
29.5 R 25, L-3 (VMT BS)  
29.5 R 25, L-4 (GB4B)

In certain applications (such as load and carry) the loader's productive capabilities might exceed the tires' tonnes-km/h capabilities. Caterpillar recommends that you consult a tire supplier to evaluate all conditions before selecting a tire model. The 29.5-25 size range and other special tires are available on request.

## Dimensions

All dimensions are approximate



		mm		
<b>1</b>	Height to top of ROPS	3765	<b>10</b>	Bucket hinge pin height at carry (B-pin) 867
<b>2</b>	Height to top of exhaust pipe	3716	<b>11</b>	Center line of rear axle to hitch 1850
<b>3</b>	Height to top of hood	2716	<b>12</b>	Rack back at maximum lift 61°
<b>4</b>	Ground clearance with 29.5 R 25, L-3	442	<b>13</b>	Dump angle at maximum lift 47°
<b>5</b>	Lift arm clearance and maximum lift	3764	<b>14</b>	Rack back at carry 49°
<b>6</b>	Bucket hinge pin height (B-pin)	4505	<b>15</b>	Rack back at ground 41°
<b>7</b>	Optional lift height	4726		
<b>8</b>	Center line of rear axle to edge of counterweight	2493		
<b>9</b>	Wheelbase	3700		

## Tire Specifications

	Width over tires mm	Ground clearance mm	Change in vertical dimensions mm	Change in operating weight kg	Change in static tipping load kg
29.5 R 25, (L-3 STL2+), Continental	3264	452	10	71	509
29.5 R 25, (L-3 STL3), Continental	3264	450	8	-16	441
29.5 R 25, (L-3 VMT), Bridgestone	3211	469	27	93	-43
29.5 R 25, (L-3 VSDL), Bridgestone	3202	479	37	1311	1245
29.5 R 25, (L-2/L-3 GP2B), Goodyear	3269	463	21	-91	129
29.5-25, (L-3 RT3B), Goodyear	3253	444	2	-297	-206
29.5-25, (L-4 GP4B), Goodyear	3284	483	41	330	411
29.5-25, (L-5 RL5K), Goodyear	3266	488	46	942	943
29.5 R 25, (L-3 XHA), Michelin	3227	442	0	0	0
29.5 R 25, (L-5 XLDD), Michelin	3212	458	16	836	587
29.5 R 25, (L-5 XMINED2), Michelin	3231	467	25	1318	1058

# Operation Specifications

		Universal Buckets				General Excavation Buckets			
		Bolt-on Cutting Edge	Flush-Mounted Teeth	Bolt-on Cutting Edge	Flush-Mounted Teeth	Bolt-on Cutting Edge	Tips and Segments	Bolt-on Cutting Edge	Tips and Segments
Rated bucket capacity	m <sup>3</sup>	6.1*	6.1*	5.6	5.6	6.1*	6.1*	5.7	5.7
Struck capacity	m <sup>3</sup>	5.3	5.3	4.9	4.9	5.2	5.2	4.9	4.9
Width	mm	3602	3580	3602	3580	3447	3533	3447	3533
Dump clearance at full lift and 45° discharge <sup>4</sup>	mm	3131	2909	3184	2961	3222	3059	3266	3108
Reach at full lift and 45° discharge <sup>4</sup>	mm	1404	1664	1350	1611	1597	1732	1537	1678
Reach with lift arms horizontal and bucket level <sup>4</sup>	mm	3032	3373	2957	3299	3086	3295	3013	3223
Digging depth	mm	193	153	193	153	141	141	141	141
Overall length <sup>4</sup>	mm	9531	9852	9456	9778	9543	9781	9470	9702
Overall height with bucket at full raise	mm	6355	6355	6272	6272	6435	6435	6343	6344
Loader turning radius with bucket in carry position	mm	8012	8083	7993	8063	7934	8044	7915	8021
Static tipping load straight <sup>1</sup>	kg	20940	21102	21127	21288	22755	22724	23184	22966
Static tipping load at full articulation (37°) <sup>1</sup>	kg	18790	18948	18969	19128	20360	20323	20778	20575
Breakout force <sup>2</sup>	kN	204	205	215	216	199	198	212	211
Bucket weight	kg	3401	3300	3296	3190	2981	3072	2828	2902
Operating weight <sup>1</sup>	kg	31348	31247	31243	31137	31324	31415	31171	31245

\* For Aggregate Arrangements

<sup>1</sup> Static tipping load and operating weight shown are based on average machine configuration with sound suppression cab and ROPS, secondary steering, air conditioning, ride control, limited slip rear, roading fenders, autolube, front access platform, back-up alarm, 29.5 R 25, L-3, tires for Universal buckets, L-4 tires for General Excavation buckets, L-5 tires for Rock buckets, full fuel tank, coolant, lubricants, lights, directional signals, CE plates and operator.

<sup>2</sup> For buckets with adapters, tips and segments, value is measured 100 mm behind the tip of the segment, with bucket hinge pin as pivot point, in accordance with SAE J732C.

<sup>3</sup> All buckets shown can be used on the high lift arrangement. High lift column shows changes in specifications from standard lift to high lift. Add or subtract as indicated to or from specifications given for appropriate bucket to calculate high lift specifications.

## Dimensions for dump clearance, reach and overall length:

<sup>4</sup> Actual dimensions taken at the tip of the Ground Engaging Tools, either the tip of the bolt-on cutting edge or the tip of the teeth, general duty.



## Standard Equipment

Standard equipment may vary. Consult your Caterpillar dealer for specifics.

### Electrical

Alarm, back-up  
Alternator (80 A, brushless)  
Batteries, maintenance-free (4)  
1000 CCA  
Lighting system, halogen (6 total)  
Main disconnect switch  
Starter, electric, heavy-duty  
Starting and charging system (24 V)  
Starting receptacle for emergency start

### Operator Environment

Bucket/Work Tool function lockout  
Cab, pressurized and sound suppressed  
ROPS/FOPS, radio ready  
(entertainment) includes antenna,  
speakers, converter (12 V, 10 A)  
and power port  
Cigar lighter and ashtray  
Coat hooks (2) with straps  
Command Control Steering  
Computerized Monitoring System  
Controls, bucket/work tool  
electro-hydraulic  
Heater and defroster  
Horns, electric  
Instrumentation, Gauges:  
Digital gear range indicator  
Engine coolant temperature  
Fuel level  
Hydraulic oil temperature  
Speedometer/Tachometer  
Transmission oil temperature  
Instrumentation, Warning Indicators:  
Axle oil temperature  
Electrical, alternator output  
Engine air filter restriction  
Engine oil pressure  
Fuel level and pressure  
Hydraulic oil filter bypass  
Hydraulic oil level  
Parking brake  
Service brake oil pressure  
Primary steering oil pressure  
Transmission oil filter bypass

Intermittent front wiper  
Lunchbox and beverage holders  
Mirrors, rearview (externally mounted)  
Seat, Cat Comfort (cloth) air suspension  
Seatbelt, retractable  
Steering column, adjustable, tilt and  
telescope  
Wet-arm, wipers/washers  
(front and rear)  
Window, sliding (left and right side)

### Power Train

Brakes, full hydraulic enclosed wet-disc  
with Integrated Braking System (IBS)  
and brake wear indicator pin  
Engine, Cat C15 with ACERT  
Technology and ATAAC  
Fan, radiator, hydraulically driven,  
variable speed (temperature sensing)  
Filters, fuel/engine air,  
primary/secondary  
Fuel priming pump (electric)  
Fuel/water separator  
Muffler, sound suppressed  
Precleaner, engine air intake  
Radiator, modular  
Starting aid (ether)  
Switch, transmission neutralizer lockout  
Torque converter (free wheel stator)  
Transmission, automatic planetary  
power shift (4F/4R)  
Variable Shift Control (VSC)

### Other

Antifreeze  
Premixed 50% concentration of  
Extended Life Coolant with freeze  
protection to -34° C  
Automatic bucket positioner,  
in-cab adjustable  
Counterweight  
Couplings, Caterpillar O-ring face seals  
Doors, service access (locking)  
Ecology drains for engine, transmission  
and hydraulics  
Fenders, steel front with mud flaps/rear  
with extensions  
Guard, power train and crankcase  
Hitch, drawbar with pin  
Hood, non-metallic power tilting  
Hoses, Caterpillar XT™  
Hydraulic oil cooler (swing-out)  
Kickout, lift and tilt, automatic  
(in-cab adjustable)  
Linkage, Z-bar, cast cross tube/tilt lever  
Oil sampling valves  
Hydraulic circuits  
Engine oil  
Transmission oil  
Coolant  
Product Link ready  
Remote diagnostic pressure taps  
Sight Gauges:  
Engine coolant  
Hydraulic oil level  
Transmission oil level  
Steering, load sensing  
Tires, Rims and Wheels (see pg.14-15)  
Vandalism protection caplocks

## Optional Equipment

Optional equipment may vary. Consult your Caterpillar dealer for specifics.

Aggregate Autodig  
Air conditioner/HVAC system  
Alternator, 95 A  
Autolube  
Axle ecology drain  
Axle oil cooler ready  
Axle oil cooler  
Buckets and work tools  
Bucket Ground Engaging Tools (GET)  
– see Cat dealer for details  
Camera, rear vision  
CB radio ready (20 A)  
Cooling package, high ambient 50°C  
Differentials, limited slip (front or rear),  
No-SPIN (rear axle only)  
Fast fill system, fuel  
Fenders, roading  
Fenders, narrow  
Guard, front window  
Guard, front window, forestry  
Guard, front window, waste  
Heater, engine coolant  
High lift arrangement, two- and three-  
valve  
Hydraulic arrangement, three-valve  
Joystick control (lift/tilt)

Lights, auxiliary (4)  
Lights, directional  
Lights, high intensity discharge (HID)  
Light, warning beacon  
Machine Security System  
Mirrors, heated, external  
Mirrors, rearview, interior  
Open canopy  
Payload Control System  
Platform, window cleaning  
Precleaner, turbine  
Precleaner, turbine/trash  
Radio, AM/FM WB (Cassette)  
Ride Control System, two- and three-  
valve  
Rubber-mounted cab glass  
Seat, heated  
Steering, secondary  
Sun visor, front  
Transmission, extreme service  
Special Machine Arrangements  
Forest Machine  
Scrap Handler  
Steel Mill Arrangement  
Waste Handler

**Merchandising Arrangement 0**  
(not for EU regulated countries)  
Wheel Loader  
Air conditioner  
Precleaner, turbine

**Merchandising Arrangement 1**  
Wheel Loader  
Conversion, CE mark  
Vandalism guard  
Air conditioner  
Power train guard  
Fast fill ready fuel system

**Merchandising Arrangement 2**  
Wheel Loader  
Conversion, CE mark  
Fast fill ready fuel system  
Aggregate Autodig  
Deluxe seat  
Ride control, 2 valve

**Merchandising Arrangement 3**  
Wheel Loader  
Conversion, CE mark  
Fast fill ready fuel system  
Hydraulics, 3 valve  
Ride control, 2 valve

**Other Special Arrangements**  
High Lift Arm, provides +221 mm  
dump clearance  
Access package (15° inclined ladder  
and front access platform)