



Volvo Construction Equipment

A35G, A40G

Volvo Articulated Haulers 34.5-39 t 447-475 hp



A passion for performance

At Volvo Construction Equipment, we're not just coming along for the ride. Developing products and services that raise productivity – we are confident we can lower costs and increase profits for industry experts. Part of the Volvo Group, we are passionate about innovative solutions to help you work smarter – not harder.

Helping you to do more

Doing more with less is a trademark of Volvo Construction Equipment. High productivity has long been married to low energy consumption, ease of use and durability. When it comes to lowering life-cycle costs, Volvo is in a class of its own.

Designed to fit your needs

There is a lot riding on creating solutions that are suited to the particular needs of different industry applications. Innovation often involves high technology – but it doesn't always have to. Some of our best ideas have been simple, based on a clear and deep understanding of our customers' working lives.



You learn a lot in 180 years

Over the years, Volvo has advanced solutions that have revolutionized the use of construction equipment. No other name speaks Safety louder than Volvo. Protecting operators, those around them and minimizing our environmental impact are traditional values that continue to shape our product design philosophy.

We're on your side

We back the Volvo brand with the best people. Volvo is truly a global enterprise, one that is on standby to support customers quickly and efficiently – wherever they are.

We have a passion for performance.



Volvo Trucks



Renault Trucks



Mack Trucks



UD Trucks



Volvo Buses



Volvo Construction Equipment



Volvo Penta



Volvo Financial Services

Pure uptime

Get ready to work with the new Volvo articulated hauler. Designed for heavy hauling in severe off-road operation, the machine's long service life, quality, reliability and durability is everything you expect from a Volvo. Hauling is easier and more efficient.

Guaranteed durability

Increase your uptime using heavy-duty front and rear frames, hitch and wet disk brakes. Volvo proven durability and the support of extensive warranty options means you never need to worry about getting the job done. Strength and durability are hallmarks of the Volvo articulated hauler.



Fifty years strong

Fifty years and fifty tonnes later, Volvo is the world's leading manufacturer of articulated haulers. We invented the concept and have been developing and building these machines for over 50 years – it has come a long way from its original 10 tonne articulated hauler. With proven success over the years, the machines include innovative technology and the renowned Volvo engine.



Service access

With industry-leading access, servicing your machine is quick and easy. The front grill swings down, opening a service platform with anti-slip steps. The electric hood opens to 90 degrees, allowing full and safe access to the engine compartment.



Volvo dealer network

The exclusive Volvo dealer network is there to support you whenever you need it. Volvo offers a number of services, local knowledge and global experience, including telematics machine monitoring – CareTrack™ and MATRIS™ – as well as superb parts availability.



UPTIME

Get ready to work with the all new A35G/A40G. Designed for heavy hauling in severe off-road operation, the machine's long service life, quality, reliability and durability is everything you expect from a Volvo. Hauling is easier and more efficient.



FUEL EFFICIENCY GUARANTEED

The new A35G, A40G has guaranteed fuel efficiency, providing up to 10% more efficiency. The Volvo engine's lower idle speed delivers an additional fuel saving for the most efficient machine.

Incredible efficiency

Improve your efficiency and move more for less. Excellent fuel efficiency, innovative technology and useful operational data tools help to control your maintenance costs and maximize your investment.

Move more for less

The machine is optimized for efficiency featuring higher payload capabilities. Its smart design allows for more capacity while reducing fuel consumption so you can move more for less.



Operational data

Receive valuable data to improve onsite efficiency and save costs. With intelligent systems from Volvo such as MATRIS™, CareTrack™ and the On Board Weighing system, you will optimize your production and minimise your operational costs.



Control your maintenance costs

The range of Customer Support Agreements offer preventive maintenance, total repairs and a number of uptime services. Volvo uses the latest technology to monitor machine operation and status, giving you advice to increase your profitability. By having a Customer Support Agreement you are in control of your service costs.



Volvo dynamic drive

Dynamic and predictive gear selection adapts to operating conditions, for improved comfort and fuel efficiency.



Hit the targets

Hit your targets with the A35G, A40G. This machine features 100% off-road performance, proven Volvo technology and increased payload – contributing to sustainable operations, year after year.

Articulated hauler concept

Go where others can't. The articulated hauler concept provides total versatility so you can access the entire jobsite and climb steeper gradients. Work in all seasons, terrains and applications. With body building solutions and different chassis options you can tailor the machine to your jobsite.



The best articulated hauler

The A35G/A40G machine delivers unbeatable off-road performance in its class with features including matched Volvo drivetrain, Automatic Traction Control including 100% differential locks, all-terrain bogie, hydro-mechanical steering.



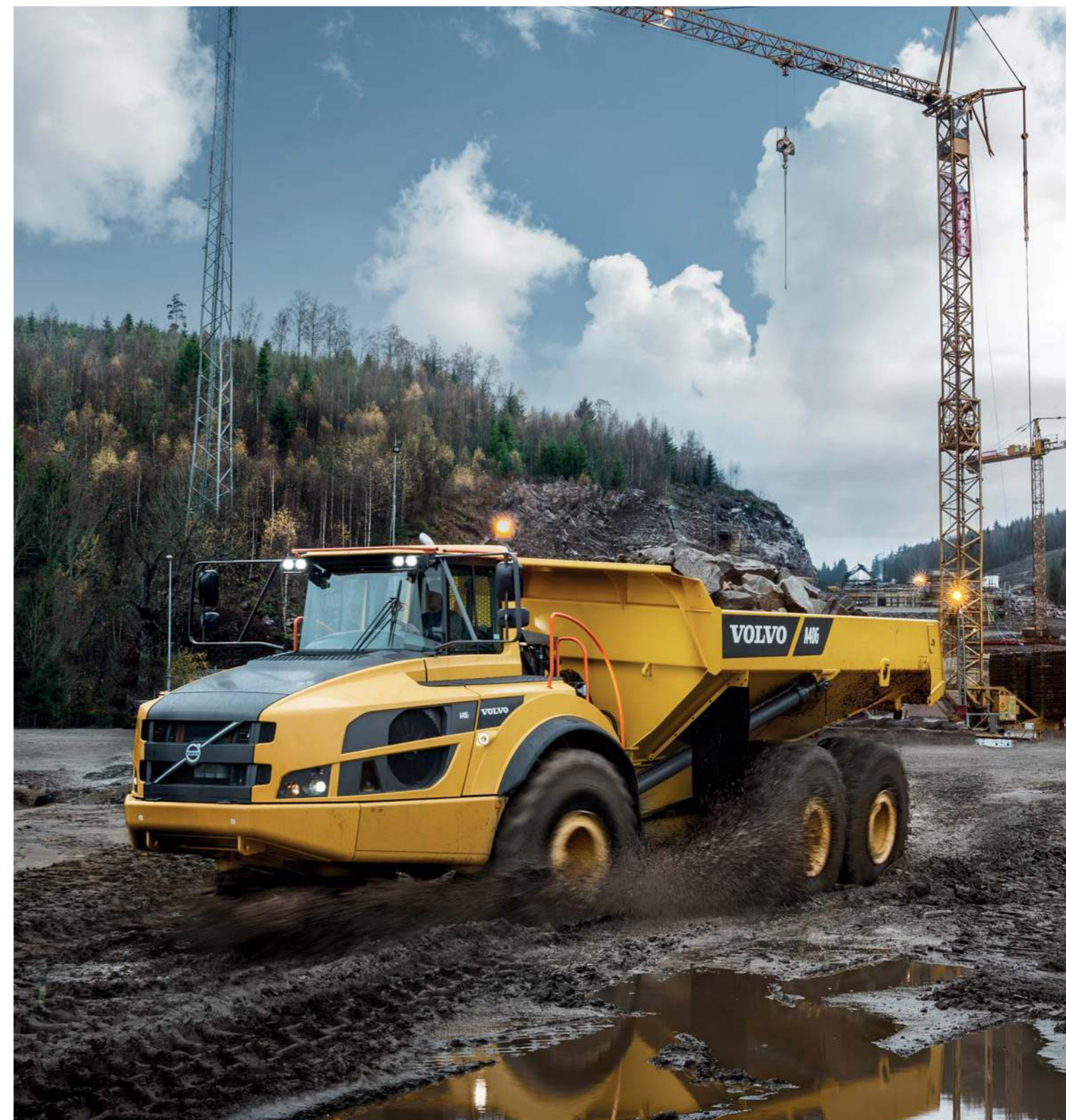
The right speed for the job

Ensure the right speed for your job using the retarders and dynamic Volvo Engine Brake to adapt your speed for maximum productivity and safety.



Load optimization

The optional On Board Weighing System guarantees the optimal load every cycle. This maximizes production, boosts fuel efficiency and reduces machine wear in all site conditions and operations.



PRODUCTIVITY

With superior productivity you can carry more in one go. The A35G, A40G articulated hauler is built to improve your cycle times and productivity.

Get ready for heavy hauling

OPERATOR'S CHOICE

Its comfortable cab and ease of operation, even in adverse conditions, makes operators choose this machine.

New gradient controls

New hill assist and dynamic Volvo Engine Brake features give you more control over your machine, whether travelling up or down steep gradients.

New dump support system

The new dump support system increases stability and control in tough environments.

New econometer

The new econometer help the operator to control the machine for extra productivity.

UPTIME

Designed for heavy hauling in severe off-road operation, its long service life, quality, reliability and durability is everything you expect from a Volvo.

Fifty years strong

Fifty years and fifty tonnes later, Volvo is the world's leading manufacturer of articulated haulers.

Guaranteed durability

With body building solutions and different chassis options you can tailor the machine to your jobsite.

FUEL EFFICIENCY GUARANTEED

Powered by the world-renowned Volvo engine delivers excellent fuel efficiency without compromising on power or performance.

The best articulated hauler

Unbeatable off-road performance and the best articulated hauler in its class.

Service access

With industry-leading access, servicing your machine is quick and easy.



PRODUCTIVITY

Move more tonnes per hour and give a 100% in all conditions.

Volvo dynamic drive

Gear shifting adapts dynamically to operating conditions, for improved comfort and fuel efficiency.



Control in comfort

The A35G, A40G is the number one operator's choice because of its industry-leading spacious cab and comfortable work environment. Its superior comfort, control, ease of operation and safety appeals to operators, maintaining productivity all day, every day.

Total operator control

The new dump support system, hill assist, dynamic Volvo Engine Brake control and econometer as well as load and dump brake, help the operator control the machine for extra productivity and safety in all conditions.

Ease of operation

The ergonomic, comfortable controls are easy to understand and suit all operators, combined with automatic functions for increased ease of operation.



Operator comfort

Feel comfortable and spend more time in the A35G/A40G. The centrally positioned operator, superior steering, excellent suspension, low noise levels, climate control, space and visibility, reduce operator fatigue for more effective operations.

Safety

A number of safety features such as superior visibility and efficient lighting help to keep the operator and people working around the machine safe in the most demanding working environments – whether it's the operator, trainers, mechanics or site workers.

OPERATOR'S CHOICE

When many other machines are onsite, most operators prefer the Volvo. Its comfortable cab and ease of operation, even in adverse conditions, makes operators choose this machine.



Volvo A35G, A40G in detail

Engine		
13 liter, 6-cylinder straight turbocharged diesel engine with 4 valves per cylinder, overhead camshaft and electronically controlled unit injectors. The engine has wet replaceable cylinder liners and replaceable valve guides and valve seats.		
A35G		
Engine model	Volvo	D13F
Max power - SAE J1995 Gross	kW	329
	hp	447
at engine speed	r/min	1 900
Flywheel power - ISO 9249, SAE J1349 Net	kW	327
	hp	445
at engine speed	r/min	1 900
Max torque - SAE J1995 Gross	Nm	2 360
Max torque - ISO 9249, SAE J1349 Net	Nm	2 345
at engine speed	r/min	1 050
Displacement	l	12,8
A40G		
Engine model	Volvo	D13F
Max power - SAE J1995 Gross	kW	350
	hp	476
at engine speed	r/min	1 900
Flywheel power - ISO 9249, SAE J1349 Net	kW	347
	hp	472
at engine speed	r/min	1 900
Max torque - SAE J1995 Gross	Nm	2 525
Max torque - ISO 9249, SAE J1349 Net	Nm	2 500
at engine speed	r/min	1 050
Displacement	l	12,8

Electrical system			
All cables, sockets and pins are identified. Cables are enclosed in plastic conduits and secured to main frame. Halogen lights. Prewired for options. Connectors meet IP67 standard for water-proofing as necessary.			
		A35G	A40G
Voltage	V	24	24
Battery	V	2x12	2x12
Battery capacity	Ah	2x170	2x170
Alternator	kW/A	3.396/120	3.396/120
Starter motor	kW	9	9
Drivetrain			
Torque converter with built-in lock-up function. Transmission: Fully automatic Volvo PowerTronic planetary transmission with nine forward gears and three reverse gears. The transmission has the ability to skip gears for fast and accurate gear selection. Dropbox: Volvo-developed, in-line design with high ground clearance and 100% longitudinal "dog clutch" type differential lock. Axles: Heavy duty, purpose built Volvo design with fully floating axle shafts, planetary type hub reductions and 100% dog clutch type diff-lock. Automatic traction control system (ATC).			
		A35G	A40G
Torque converter		2.1:1	2.1:1
Transmission	Volvo	PT 2519	PT 2519
Dropbox	Volvo	IL2 ATC	IL2 ATC
Axles	Volvo	ARB H35	ARB H40
Suspension			
Front suspension: Three point suspension consisting of a-stay fitted to the frame structure by a spherical rubber bushing, shock absorbers with accumulators and cross stays. Rear suspension: 3-point bogie beam suspension consisting of a straddle-mounted bogie beam with maintenance free rubber bearings, flexible rubber pads, cross stays and a-stay.			
Brake System			
Fully hydraulic, wet multiple disc brakes with enclosed, forced oil-cooled multiple discs on all wheels. Two circuit brake system. Complies with ISO 3450 at total machine weight. Circuit division: One circuit for front axle and one for bogie axles. Parking brake: Spring-applied disc brake acting on the trailer unit propeller shaft. When the parking brake is applied, the longitudinal differential locked. Retarder: Service brake retarder function and Volvo Engine Brake (VEB).			
Steering System			
Hydro-mechanical articulated steering, self compensating design. Two double-acting steering cylinders. Steering angle: 3,4 steering wheel turns lock-to-lock, ±45°. Steering system, including secondary steering fulfi lls ISO 5010.			

Chassis			
Frames: box type, heavy duty. High strength steel, robot welded. Rotating hitch: 100% maintenance free, fully sealed, with permanently greased tapered roller bearings.			
Cab			
Mounted on rubber pads. Ergonomically designed. Easy entry and exit. Wide angle forward view. Operator centrally positioned above the front axle. Adjustable operators seat with retractable seat belt. Tilt/telescopic steering wheel. Ergonomically positioned controls. Filtered air. Optional climate control system. Operator communication system: Contronics. Large color display, user-friendly and easy-to-understand information, all vital machine functions are constantly monitored. Instructor seat with seat belt. Safety: ROPS/FOPS standards approved according to ISO3471, SAE J1040 / ISO3449, SAE J231.			
		A35G	A40G
Sound level in cab (ISO 6396) - LpA	dB(A)	72	72
External sound level (ISO 6395) - LwA	dB(A)	112	112
Internal sound level with sound kit: 70 dB(A) External sound level with sound kit: 110 dB(A)			
Hydraulic system			
Pumps: Four variable displacement piston pumps driven by the flywheel PTO. Two load-sensing used for steering and tipping and two electrical controlled used for fan, brake cooling and brake power supply. One ground-dependent piston pump for secondary steering mounted on the dropbox. Two return oil filters with magnetic cores provide effective oil filtration.			
		A35G	A40G
System max working pressure	MPa	26	26
Dumping System			
Patented Load and Dump Brake. Dumping Cylinders: two single stage double acting cylinders.			
		A35G	A40G
Tipping angle	°	72	70
Tipping time with load	s	12	12
Lowering time	s	10	10

Body			
		A35G	A40G
Plate thickness			
Front	mm	8	8
Sides	mm	11	11
Bottom	mm	14	14
Chute	mm	16	16
Material HB450 steel HB450 steel			
Yield strength	N/mm ²	1 150	1 150
Tensile strength	N/mm ²	1 350	1 350
Load Capacity			
		A35G	A40G
Standard Body			
Load capacity	kg	34 500	39 000
Body, struck	m ³	16,6	18,4
Body, heaped 2:1	m ³	21,2	24
With overhung tailgate			
Body, struck	m ³	17	18,8
Body, heaped 2:1	m ³	22,1	24,7

Specifications

REFILL CAPACITIES

	A35G	A40G
Crankcase	50	50
Fuel tank	480	480
Cooling system	44	44
Brake cooling system	188	188
Transmission	43	43
Dropbox	9	9
Axles, front/bogie	25/51	26/53
Hydraulic tank	174	174

OPERATING WEIGHT UNLOADED

	A35G	A40G
Tires	26.5R25*	29.5R25**
Front	15 850 kg	16 100 kg
Rear	13 000 kg	13 700 kg
Total	28 950 kg	29 800 kg
Payload	34 500 kg	39 000 kg

Operating weight includes all fluids and operator

*) A35G with tires 775/65R29, add 200 kg /axle

**) A40G with tires 875/65R29, add 300 kg /axle

GROUND PRESSURE

	A35G	A40G	A35G	A40G
Tires	26.5R25	29.5R25	775/65R29	875/65R29
Unloaded				
Front	132 kPa	111	115	98
Rear	54 kPa	47	48	42
Loaded				
Front	158 kPa	139	138	121
Rear	183 kPa	167	160	146

Excavator PASS MATCHING

	EC380	EC480	EC750	EC950
Number of passes				
A35G	9	7	5	4
A40G	10	8	5	4

Well matched, 4-6 buckets.

Excavator under capacity, 7 buckets or more.

Excavator undersized for optimum match.

SPEED

	A35G	A40G	
Forward			
1	5.9 km/h	5.8	
2	8.6 km/h	8.5	
3	10.3 km/h	10.4	
4	15.2 km/h	15	
5	21.9 km/h	21.6	
6	27.7 km/h	27.3	
7	36.6 km/h	36.1	
8	48.5 km/h	47.8	
9	57 km/h	57	
Reverse			
1	6.6 km/h	6.5	
2	9.5 km/h	9.4	
3	18 km/h	18	

TOTAL WEIGHT

	A35G	A40G
Tires	26.5R25*	29.5R25**
Front	19 100 kg	20 100 kg
Rear	44 350 kg	48 700 kg
Total	63 450 kg	68 800 kg

*) A35G with tires 775/65R29, add 200 kg /axle

**) A40G with tires 875/65R29, add 300 kg /axle

Wheel loader PASS MATCHING

	L150	L180	L220	L250	L350
Number of passes					
A35G	5	4	4	3	3
A40G	5	5	4	4	3

Well matched, 2-3 buckets.

Loader under capacity, 4 buckets or more.

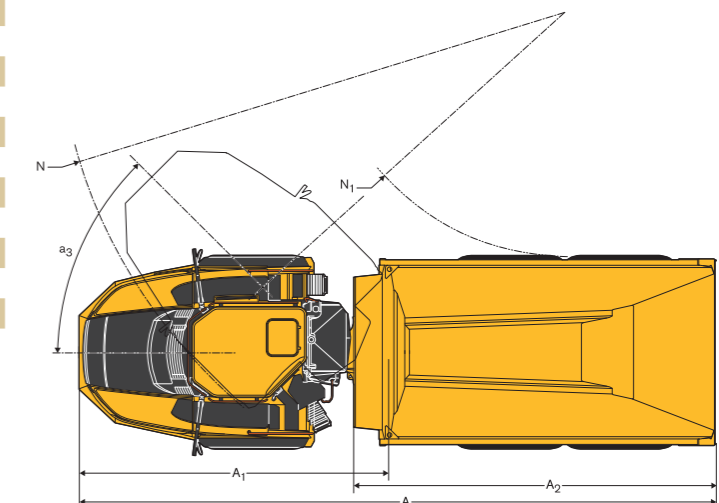
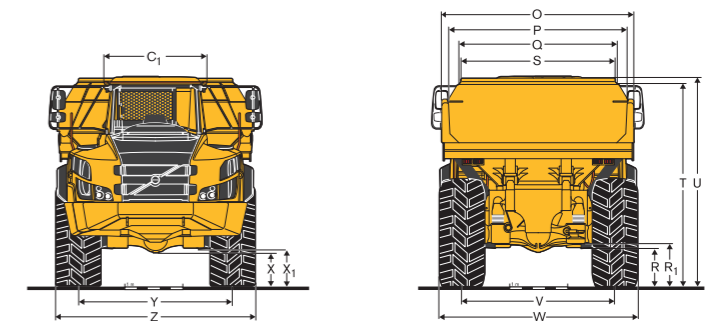
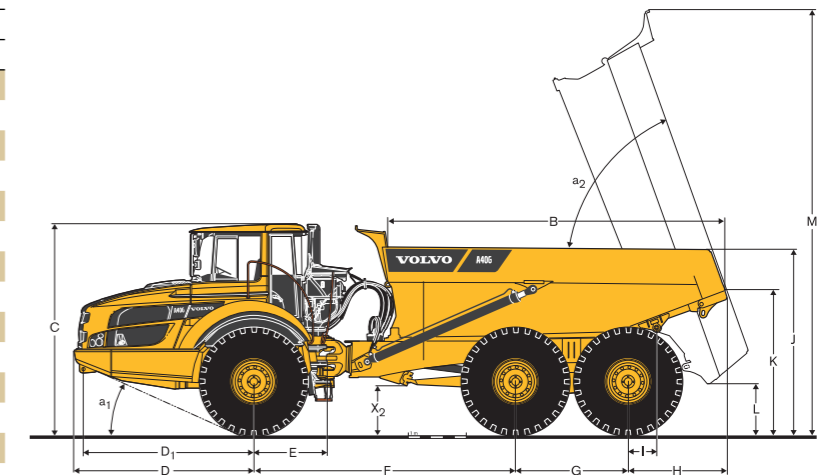
Loader undersized for optimum match, reach might be an issue.

DIMENSIONS

Pos	A35G	A40G
A	11 180 mm	11 263 mm
A ₁	5 476 mm	5 476 mm
A ₂	6 241 mm	6 404 mm
B	5 568 mm	5 844 mm
C	3 547 mm	3 599 mm
C ₁	1 772 mm	1 772 mm
D	3 100 mm	3 100 mm
D ₁	2 942 mm	2 942 mm
E	1 277 mm	1 277 mm
F	4 578 mm	4 518 mm
G	1 820 mm	1 940 mm
H	1 683 mm	1 706 mm
I	650 mm	495 mm
J	3 014 mm	3 132 mm
K	2 304 mm	2 435 mm
L	890 mm	822 mm
M	7 236 mm	7 265 mm
N	8 866 mm	8 957 mm
N ₁	4 416 mm	4 327 mm
O	3 216 mm	3 430 mm
P	2 902 mm	3 118 mm
Q	2 553 mm	2 820 mm
R	564 mm	613 mm
R ₁	652 mm	701 mm
S	2 423 mm	2 651 mm
T	3 382 mm	3 427 mm
U	3 498 mm	3 546 mm
V	2 534 mm	2 636 mm
W	3 221 mm	3 403 mm
X	500 mm	553 mm
X ₁	592 mm	645 mm
X ₂	738 mm	788 mm
Y	2 534 mm	2 636 mm
Z	3 221 mm	3 403 mm
a ₁	23.6°	24.3°
a ₂	72°	70°
a ₃	45°	45°

A35G: Unloaded machine with 26.5R25

A40G: Unloaded machine with 29.5R25



Equipment

STANDARD EQUIPMENT

Engine

Direct injected, electronically controlled, turbocharged, intercooled
Grouped oil filters, for ease of change
Preheater for easier cold starts
VEB (exhaust retarder EPG + compression brake)

Tires

26.5R25

Drivetrain

6x4 and 6x6 automatically engaged drive modes
Dog clutch type 100% diff-locks in all axles
Full automatic transmission
Dropbox with longitudinal diff-lock
Torque converter with automatic lock-up

Electrical system

80 A alternator
Battery disconnect switch
Extra 24 V socket for lunch cooler

Lights:

Back-up light
Brake lights
Cab lighting
Direction indicators
Headlights
Instrument lighting
Parking lights
Rear lights

Brake System

Hill assist
Load & Dump Brake
Retarder pedal
Parking brake on propeller shaft
Two circuit, fully hydraulic, wet discs on all axles

Body

Body prepared for exhaust heating and optional equipment

Safety

Anti-slip steps and platforms
Dump body lock
Handrails on steps and platforms
Hazard lights
Horn
Protective grill for cab rear window
Rear-view mirrors
Retractable 3-inch safety belt
ROPS/ FOPS protected Care Cab
Secondary steering
Steering joint lock
Windshield washers
Windshield wipers with interval function
Dump support system

Comfort

ACC control panel
Ashtray
Cab heater with filtered fresh air and defroster
Can holder /storage tray
Cigarette lighter
Instructor seat with seat belt
Overhead console for radio
Sliding window
Space for lunch cooler
Storage box
Sun visor
Tilt/telescopic steering wheel
Tinted glass

STANDARD EQUIPMENT

Operator information interface

Gauges:
Brake pressure
Fuel
Speedometer
Tachometer
Wet disc brakes cooling oil temperature

Warning lights grouped and easy to read

Central warning (3 levels) for all vital functions

Central positioned information display

Automatic pre-start checks
Clock
Hour meter
Operational information, easy-to-navigate menu
Troubleshooting diagnostics

Exterior

Front mudguard wideners and rear mudflaps

Service and Maintenance

Electrical engine hood and belly plate
Machine Tracking Information System MATRIS
Service platform integrated in the front grill
Tool box

OPTIONAL EQUIPMENT

Engine

Air pre-cleaner, cyclone type
Air pre-cleaner, oil-bath type
Air filter, heavy duty, EON
Engine heater, 120 V, USA
Engine heater, 240 V
Engine heater, diesel (Eberspächer)
Engine heater, diesel with separate tank
Engine auto shutdown
Engine shutdown timer
External emergency engine stop
Fuel filter, extra
High engine idle speed

Tires

775/65R29

Electrical system

Headlights, LED
Warning beacon, LED
Working lights, halogen
Working lights, LED
Entrance light
Anti-theft system (pin code)
Rear view camera
Reverse alarm
CAN-BUS interface, extra

OPTIONAL EQUIPMENT

Cab

Noise reduction kit (fulfils 2000/14/EC)
Anchorage, operator's manual
Cab heating/ventilation timer
Cable kit, for cab heater 240 V
HEPA cab air filter
Bluetooth radio kit
Rear view mirrors, adjustable, el.heated
Seat belt XXL, non-retractable
Sun blinds, side windows
Universal key
Air suspended, heated, fully adjustable seat
Armrest for operator seat
Headrest for operator seat
Low profile cab

Body

Body exhaust heating
Front spillguard, extra
Side extension, 200 mm
Side extension, light material
Tailgate, overhung, linkage-operated
Tailgate, overhung, wire-operated
Tailgate, underhung
Wear plates, 450 HB
Underground body

OPTIONAL EQUIPMENT

Safety

Fire suppression system
Warning triangle
First aid kit and fire extinguisher
Fire extinguisher
Wheel chocks

Service and Maintenance

Lube system, standard machine
Lube system, tailgate
Lubrication hose, ground level greasing
Tool kit

Other

Siberian kit -40°C
On board weighing (OBW)
Arctic oil kit
CareTrack
Fast fuelling system
Jump start connector, NATO -type
Frame extension

SELECTION OF VOLVO OPTIONAL EQUIPMENT

Entrance light



On board weighing



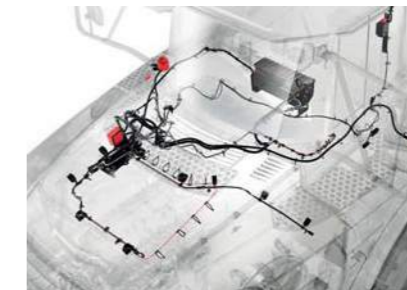
Heavy duty air filter



Fast fuelling



Volvo fire suppression system



Rear view camera



Not all products are available in all markets. Under our policy of continuous improvement, we reserve the right to change specifications and design without prior notice. The illustrations do not necessarily show the standard version of the machine.



BIG ENOUGH TO TRUST SMALL ENOUGH TO CARE

Founded in 1974 CJD are in the industry for the long term and have the skills and knowledge to support you and your equipment. CJD Equipment takes great pride in being Volvo CE's first and only authorised partner in Australia for over 25 years. Together, we provide a full range of machinery ideally suited to Australia's unique landscapes and industry requirements. These products are fully supported through a nationwide network of branches, and carefully selected dealers and service agents, strategically positioned to ensure total support.

With fully equipped workshops and parts warehouses in every capital city, and dealers throughout major regional towns, we have the support network in place to ensure you're well supported, no matter where you or your machines are. Ongoing in-house training programs ensures our technicians' skills keep pace with the latest technology and product advances.

Head Office


54 Great Eastern Highway
South Guildford, WA 6055


Visit www.cjd.com.au

Call 1300 139 804

Email marketing@cjd.com.au

 [Facebook.com/cjdequipment](https://www.facebook.com/cjdequipment)

 [Linkedin.com/company/cjd-equipment](https://www.linkedin.com/company/cjd-equipment)

 [Instagram.com/cjd_equipment](https://www.instagram.com/cjd_equipment)

