

815

SOIL COMPACTOR



Engine Power
Operating Weight

205 kW (275 hp)
22 522 kg (49,652 lb)¹

205 kW (275 hp)
22 232 kg (49,013 lb)²

¹ U.S. EPA Tier 4 Final/EU Stage V
² U.S. EPA Tier 3/EU Stage IIIA equivalent



The new Cat® 815 Soil Compactor gives you technology and power that increases your productivity. Cover more area in less time, especially on large jobsites. New features reduce your maintenance cost and downtime, and an improved operator station keeps you productive throughout the day.

THE NEW CAT® 815

RAISING THE BAR IN COMPACTION



BETTER COMPACTION WITH LESS DOWNTIME

The new Cat 815 Soil Compactor gives you the productivity to handle large jobs in less time, while reducing maintenance costs and operator fatigue.

- + ADVANCED TECHNOLOGY AND A ROBUST POWER TRAIN DELIVER MAXIMUM EFFICIENCY ON EVERY SITE
- + NEW DESIGN FEATURES REDUCE YOUR MAINTENANCE COSTS BY UP TO 9%
- + FROM STEERING CONTROLS TO CLIMATE CONTROL, THE CAB DESIGN INCREASES PRODUCTIVITY



MAINTENANCE SAVINGS

GROUPED COMPONENTS
REDUCE MAINTENANCE TIME

SIGHT GAUGES REDUCE
CONTAMINATION RISK
AND DAILY SERVICE TIME



VIMS™ ALERTS
OPERATOR
BEFORE
COMPONENT
FAILURE

NEW RADIAL
AIR FILTER
HAS 3 TIMES
LONGER LIFE

DO MORE WITH IMPROVED TECHNOLOGY

GPS mapping, specialized Cat Compact system, and both onboard and online system monitoring make your machine more productive and longer lasting.

UP TO 9% LOWER MAINTENANCE COSTS

Grouped servicing points, redesigned access, and a long-lived new filtration system reduce your costs and downtime.

GREATER OPERATOR COMFORT AND PRODUCTIVITY

Cab pressurization, climate control, sound dampening, and a Premium Plus seat make the entire workday comfortable, while Cat's Steering and Transmission Integrated Control (STIC™) system reduces fatigue and cycle time.



INCREASED PRODUCTIVITY

OPTIMIZED DESIGN AND TECHNOLOGY HELP YOU DO MORE



GPS-BASED EFFICIENCY

GPS mapping (now offered from the factory) provides visibility to cut/fill data and compacted areas. Optional Cat Compact 3D mapping technology combines advanced compaction measurement, in-cab guidance, and reporting capabilities to help you consistently meet compaction targets quickly, uniformly, and in fewer passes – saving on fuel and the cost of unnecessary rework.



ACCESS VITAL INFORMATION

A 3G touchscreen with user-friendly interface allows operators to monitor real-time machine performance and operating data with the Vital Information Management System (VIMS).



CAT COMPACTION CONTROL

Cat Compaction Control with Machine Drive Power (MDP) is an energy-based measurement system that correlates compaction with rolling resistance to provide an indication of soil stiffness.



IMPROVED EQUIPMENT MANAGEMENT

Cat Link technology (standard) provides access to machine location, hours, fuel consumption, idle time, events, and diagnostic codes through the online VisionLink® interface.



SUPERIOR TAMPING DESIGN

Tamping tips have a chevron design, providing greater ground pressure, more compaction, excellent traction, and a smooth ride. The tamping-tip pattern is symmetrical for equal compaction in forward or reverse.



DURABLE DESIGN

The adjustable cleaner bar tips (standard or abrasive) are heat-treated and direct-hardened cutting edge steel to increase wear life, lowering your operating costs. Tamping tips are replaceable and durable for longer life. Each tip is welded to a base assembly, then welded directly to the drum.



ELIMINATE CARRYOVER DIRT

Each wheel has two cleaner bars to keep the drums free of carryover dirt, regardless of rolling direction, maximizing your efficiency.

INCREASED PRODUCTIVITY

OPTIMIZED DESIGN AND TECHNOLOGY HELP YOU DO MORE



EASY MAINTENANCE

QUICK SERVICE



EASY TO SERVICE

Access to the emergency shutdown, battery disconnect, and jump start are at ground level. Coolant, transmission oil, and the hydraulic system are all equipped with sight gauges for quicker inspection and reduced contamination risk. The hydraulic oil cooler, fuel cooler, and condenser are grouped together, and grease points are centralized.



EASIER ELECTRONICS ACCESS

The 815's electronics bay is accessible from inside the cab. This configuration is not only easier, but allows access in a climate-controlled environment.



IMPROVED AIRFLOW TECHNOLOGY

The radial air filter provides three times the previous filter life, and a new electronic air inlet restriction indicator alerts the operator to any airflow blockages.

ENHANCED OPERATOR COMFORT

COMFORT WHERE IT COUNTS



SINGLE-STICK CONTROL

Easier control and shorter, faster cycles reduce operator fatigue and increase efficiency. The STIC system combines steering, gear selection, and more into a single lever. Steering is accomplished with small side-to-side inputs, and gear changes are controlled with the fingers.



IMPROVED INTERIOR AIR

The operator's preferred temperature settings are maintained with automatic climate control. A powered precleaner air filtration system keeps the inside air pressurized, keeping dust and contaminants out.



PREMIUM PLUS SEAT

The Premium Plus seat delivers total comfort throughout the workday. Standard features include leather finish, forced air heating and cooling, two-way thigh adjustment, power lumbar and back bolster adjustment, and dynamic end dampening. The seat also features a flip-up armrest for easier ingress/egress.

PROVEN POWER

The Cat 7.1 engine is designed for maximum fuel economy and increased power density, reliable performance, and low emissions. Two engine options are available, meeting U.S. EPA Tier 4 Final/ EU Stage V emission standards or emitting equivalent to U.S. EPA Tier 3/EU Stage IIIA.

SMOOTH POWER

Advanced Productivity Electronic Control System (APECS) transmission controls deliver improved shifting performance and a higher level of comfort for operators. APECS allows you to achieve greater momentum on grades and save fuel by carrying that momentum through the shift points.

FUEL-SAVING CONTROLS

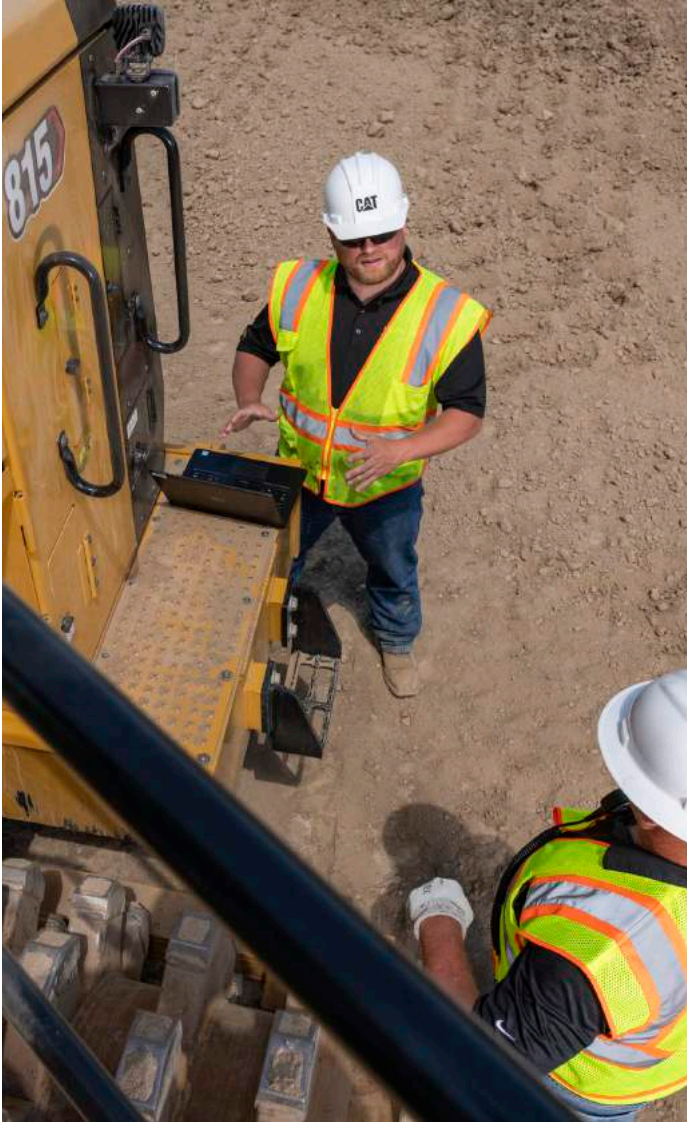
Automatic engine and electrical system shutdown controls save even more fuel by reducing unnecessary idling. Throttle lock reduces fuel burn further by maintaining constant speed and also reduces operator fatigue.

DO MORE WITH LESS FUEL BURN

POWERFUL EFFICIENCY



PROTECTING YOUR TEAM SAFE DESIGN



INCREASED VISIBILITY

Backing is safer for operators and everyone onsite with a standard rearview camera. Standard cab-mounted LED warning strobes increase visibility of the machine, further reducing risk.

REDUCED SOUND LEVELS

Low interior sound levels increase operator comfort, and spectator sound levels have also been reduced. Optional low sound packages reduce the noise level even further.

SAFER ACCESS

Emergency shutdown controls are at ground level, and access to most major components is at ground level or from the platform. Ladders, platform, and railing are designed to ensure three points of contact at all times during entry and exit.

TECHNICAL SPECIFICATIONS

See cat.com for complete specifications.

ENGINE – TIER 3/STAGE IIIA EQUIVALENT			
Engine Model	Cat C7.1		
Rated Speed	2,200 rpm		
Net Power (SAE J1349:2011)	186 kW	249 hp	
Net Power (ISO 9249:2007)	186 kW	249 hp	
Gross Power (SAE J1995:2014)	213 kW	286 hp	
Engine Power (ISO 14396:2002)	205 kW	275 hp	
Peak Torque @ 1,400 rpm	1016 N·m	749 lbf-ft	
Torque Rise	26%		
<ul style="list-style-type: none"> • Net power available at flywheel when the engine is equipped with fan, air cleaner, muffler, and alternator with engine speed at 2,200 rpm. 			

ENGINE – TIER 4 FINAL/STAGE V			
Engine Model	Cat C7.1		
Rated Speed	2,200 rpm		
Net Power (SAE J1349:2011)	186 kW	249 hp	
Net Power (ISO 9249:2007)	186 kW	249 hp	
Gross Power (SAE J1995:2014)	212 kW	284 hp	
Engine Power (ISO 14396:2002)	205 kW	275 hp	
Peak Torque @ 1,400 rpm	1223 N·m	902 lbf-ft	
Torque Rise	52%		
<ul style="list-style-type: none"> • Net power available at the flywheel when the engine is equipped with fan, air cleaner, aftertreatment, and alternator with engine speed at 2,200 rpm. 			

WEIGHTS			
Tier 4 Final/Stage V	22 522 kg	49,652 lb	
Tier 3/Stage IIIA equivalent	22 232 kg	49,013 lb	

TRANSMISSION					
Transmission Type	Cat Planetary Power Shift				
Forward 1	6.3 km/h	3.9 mph	Reverse 1	7.2 km/h	4.5 mph
Forward 2	10.8 km/h	6.7 mph	Reverse 2	12.4 km/h	7.7 mph
Forward 3	18.2 km/h	11.3 mph	Reverse 3	18.4 km/h	11.4 mph
*Speeds assume hard packed, semi-cohesive/cohesive soil with 9.5% rolling resistance.					

SERVICE REFILL CAPACITIES			
Fuel Tank	500 L	132.1 gal	
Diesel Exhaust Fluid Tank	16 L	4.2 gal	
<ul style="list-style-type: none"> • All nonroad Tier 4 Final and Stage V diesel engines are required to use: <ul style="list-style-type: none"> – Ultra Low Sulfur Diesel (ULSD) fuels containing 15 ppm for EPA and 10 ppm for EU (mg/kg) sulfur or less. Biodiesel blends up to B20 are acceptable when blended with 15 ppm (mg/kg) sulfur or less ULSD and when the biodiesel feedstock meets ASTM D7467 specifications. – Cat DEO-ULS™ or oils that meet the Cat ECF-3, API CJ-4, and ACEA E9 specifications are required. – Diesel Exhaust Fluid (DEF) that meets all requirements defined in ISO 22241-1:2006. 			

AIR CONDITIONING SYSTEM	
<p>The air conditioning system on this machine contains the fluorinated greenhouse gas refrigerant R134a (Global Warming Potential = 1430). The system contains 1.9 kg of refrigerant which has a CO₂ equivalent of 2.717 metric tonnes.</p>	

SOUND			
	Standard	Suppression	Suppression EU
Operator Sound Level (ISO 6396:2008)	70 dBA		
Tier 4 Final/Stage V			
Machine Sound Level (ISO 6395:2008)	111 dBA	109 dBA	–
Machine Sound Level (ISO 6395:2008)	–	–	107 dBA
Tier 3/Stage IIIA Equivalent			
Machine Sound Level (ISO 6395:2008)	112 dBA	110 dBA	–
<ul style="list-style-type: none"> • The operator sound pressure level was measured according to the test procedures and conditions specified in ISO 6396:2008. The measurement was conducted at the maximum engine cooling fan speed. • The operator sound pressure level uncertainty is ± 2 dB(A) • Hearing protection may be needed when the machine is operated with a cab that is not properly maintained or when the doors or windows are open for extended periods or in a noisy environment. • The machine sound power level was measured according to the test procedures and conditions specified in ISO 6395:2008. The measurement was conducted at the maximum engine cooling fan speed. 			

BLADES			
Straight Blade			
Capacity	2.06 m ³	2.69 yd ³	
Overall Width	3761 mm	12.3 ft	
Height	860 mm	2.8 ft	
Digging Depth	222 mm	0.7 ft	
Ground Clearance	802 mm	2.6 ft	
Maximum Tilt	346 mm	1.1 ft	
Turning Radius - Outside Corner of Blade	6437 mm	21.1 ft	
Turning Radius - Inside Face of Pusharm	2520 mm	8.3 ft	
Weight	800 kg	1,764 lb	
Total Operating Weight	22 522 kg	49,652 lb	

WHEELS			
Tamping Foot			
Weight (Group)	4409 kg	9,720 lb	
Outside Diameter	1412 mm	55.6 in	
Drum Diameter	1029 mm	40.5 in	
Drum Width	991 mm	39.0 in	
Tips per Row	12		
Tips per Wheel	60		
Replaceable	Weld On		
Width Over Drums	3243 mm	127.7 in	
Width Between Drums	1261 mm	49.6 in	
Tip Height	192 mm	7.5 in	

STANDARD & OPTIONAL EQUIPMENT

Standard and optional equipment may vary. Consult your Cat dealer for details.

POWER TRAIN	STANDARD	OPTIONAL
Advanced Productivity Electronic Control System (APECS)	•	
Axles – standard or non-spin rear		•
Brakes, full hydraulic, enclosed, wet multiple disc service brakes	•	
Cat clean emission module (Tier 4 Final/Stage V only)	•	
Electro hydraulic parking brake	•	
Electronic Clutch Pressure Control (ECPC)	•	
Engine, Cat C7.1 configured for two emissions options: Tier 4 Final/Stage V or Tier 3/Stage IIIA equivalent	•	
Engine driven cooling fan – suction	•	
Fuel priming pump (electric)	•	
Fuel-to-air cooler	•	
Ground level engine shutoff	•	
Heater, engine coolant, 120V		•
Heater, engine coolant, 240V		•
Throttle lock	•	
Torque converter	•	
Transmission, planetary, with 3F/3R speed range control	•	
ELECTRICAL	STANDARD	OPTIONAL
Alarm, back-up	•	
Alternator, 150 amp	•	
Batteries, maintenance-free	•	
Electrical system, 24V	•	
Ground level lockable master disconnect switch	•	
Lighting system (front and rear)	•	
Lights – standard or LED		•
Starting receptacle for emergency start	•	
OPERATOR ENVIRONMENT	STANDARD	OPTIONAL
Cat Compact Ready	•	
Air conditioner	•	
Cab, sound-suppressed pressurized	•	
Camera, rear vision	•	
Cat Compaction Control (ready)	•	
Fingertip shifting controls	•	
Flip-up armrest	•	
Glass (window) – rubber-mounted glass	•	
Horn, electric	•	
Hydraulic controls – seat mounted	•	
Implement hydraulic lockout	•	
Lunch box and beverage holders	•	

OPERATOR ENVIRONMENT (CONTINUED)	STANDARD	OPTIONAL
Mirrors (cab) – standard or heated		•
Precleaner (cab) – powered	•	
Radio, AM/FM/Aux/USB/Bluetooth		•
Radio ready for entertainment: antenna, speakers, converter (12V, 10-15 amp)	•	
Seat (cab) – heated and ventilated	•	
Seat, Cat Premium Plus (leather)	•	
STIC control system with lockout	•	
Vital Information Management System (VIMS): graphical information display, external data port, customizable operator profiles, event indicator light on rear grill	•	
TIRES, RIMS AND WHEELS	STANDARD	OPTIONAL
Wheels, tamping foot	•	
GUARDS	STANDARD	OPTIONAL
Cleaner bars with teeth	•	
Guards, crankcase and power train	•	
Guard, driveshaft	•	
FLUIDS	STANDARD	OPTIONAL
Antifreeze, -50° C (-58° F)		•
Antifreeze, premixed 50% concentration extended life (-34° C/-29° F)	•	
OTHER STANDARD EQUIPMENT	STANDARD	OPTIONAL
DEF tank fill gauge	•	
Ecology drains for engine, radiator, transmission, hydraulic tank	•	
Engine, crankcase, 500 hour interval with CJ-4 oil	•	
Fire suppression ready	•	
Fuel tank, 500 L (132.1 gal)	•	
Hitch, drawbar with pin	•	
Hydraulic, engine, and transmission oil coolers	•	
Oil change system, high speed	•	
Oil sampling valves	•	
Steering, load sensing	•	
Total hydraulic filtration system	•	
Vandalism protection caplocks	•	



オフロード法2014年
基準適合



For more complete information on Cat products, dealer services and industry solutions, visit us on the web at www.cat.com.

© 2021 Caterpillar. All Rights Reserved.

VisionLink® is a trademark of Trimble Navigation Limited, registered in the United States and in other countries.

Materials and specifications are subject to change without notice. Featured machines in photos may include additional equipment. See your Cat dealer for available options.

CAT, CATERPILLAR, LET'S DO THE WORK, their respective logos, STIC, VIMS, DEO-ULS, "Caterpillar Corporate Yellow", the "Power Edge" and Cat "Modern Hex" trade dress as well as corporate and product identity used herein, are trademarks of Caterpillar and may not be used without permission.
www.cat.com www.caterpillar.com

AEXQ3110-00
Build Number: 11A
Global

