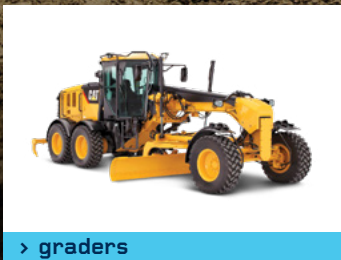


**LUXTON  
PLANT**  
RENTAL



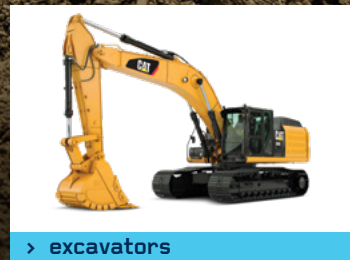
> graders



> compactors



> water trucks



> excavators

FULL RANGE OF EQUIPMENT AT  
[luxtonplant.com.au](http://luxtonplant.com.au)



1300 LUXTON (589 866)



> excavators 1



> dozers 3



> artice dump trucks 5



> graders 2



> compactors 4



> wheel loaders 6

- > Australian owned by the Luxton family for over 50 years
- > Servicing major contractors, councils and government departments throughout Victoria and New South Wales.
- > Excavators, 5 - 50 ton with ROPS cabins, hose burst valves, standard & tilt hitches, rock hammers, rippers, sorting buckets & trench buckets.
- > Quality low hour and new plant of all types
- > All loaders over 3.5 metres fitted with Loadrite scales, rear cameras and Crane valves fitted on all tool carriers
- > Hand rails to all excavators over 14 tonnes
- > Tilt hitches on all excavators 5 - 24 ton
- > ROPS cabins available on all excavators, and selected water trucks
- > Rear cameras available on excavators over 14 ton and all water trucks
- > GPS systems from Trimble and Topcon
- > Branches at Melbourne, Echuca and Bendigo
- > PROLEC Craning system available on Caterpillar 336 – Allows lifts up to 15 tons



TRUSTED



SAFETY



QUALITY



SUSTAINABILITY



> dual view dumper 7



> tool carrier 9



> water trucks 11



> tracked loader 8



> self-propelled rollers 10



> compact equipment 12

### 1. EXCAVATORS

- 5 - 8 TON
- 12 - 14 TON
- 20 - 24 TON<sup>①</sup>
- 30 - 36 TON<sup>①</sup>
- 40 - 50 TON<sup>②</sup>
- ROCK HAMMERS, RIPPERS AND TRENCH BUCKETS
- TILT HITCH ON ALL EXCAVATORS 5 - 24 TON
- SHAKER BUCKET
- COMPACTION WHEELS

### 2. GRADERS

- CAT 140 VHP<sup>②</sup>

### 3. DOZER

- CAT D6<sup>②</sup>
- CAT D6 LGP PAT BLADE<sup>②</sup>
- KOMATSU D65<sup>②</sup>
- KOMATSU D155
- CAT D8

### 4. COMPACTOR

- CAT 815

### 5. ARTIC DUMP TRUCKS

- VOLVO A30G/J<sup>③</sup>
- BELL B30E<sup>③</sup>
- CAT 745<sup>③</sup>
- VOLVO A40G/A45G<sup>③</sup>

### 6. WHEEL LOADERS

- CAT 930K
- KOMATSU WA270
- KOMATSU WA320
- VOLVO L120H<sup>④</sup>
- CAT 966<sup>④</sup>
- KOMATSU WA470-8<sup>④</sup>
- CAT 980<sup>④</sup>
- KOMATSU WA500-8YL<sup>④</sup>
- ROCK BUCKET AVAILABLE

### 7. DUAL VIEW DUMPER

- WACKER NEUSON DV90

### 8. TRACKED LOADER

- CAT 259D3
- AVAILABLE WITH 4/1 BUCKET, PALLET FORKS & SMUDGER BAR

### 9. TOOL CARRIER

- CAT 930K
- KOMATSU WA270
- KOMATSU WA320
- VOLVO L120H<sup>④</sup>

### 10. SELF PROPELLED ROLLERS

- 7 - 20 TON SMOOTH / PADFOOT
- 12 - 24 TON MULTI TYRES
- 1.7 - 3 TWIN DRUMS

### 11. WATER TRUCKS

- ON ROAD 7,000 - 15,000 LITRES
- OFF ROAD 23,000 - 35,000 LITRES

### 12. COMPACT EQUIPMENT

- BOMAG BW100 - 1.7 TON TWIN DRUM WITH TRAILER

① PROLEC WEIGHING SYSTEM ON CAT 336FL – LIFT UP TO 15 TONS

② GPS SYSTEMS AVAILABLE ON THESE MACHINES

③ INCLINOMETER & PAYLOAD SYSTEMS

④ LOADRITE SCALES FITTED



**Head Office / Melbourne:**  
5 Advantage Drive  
Dandenong South 3164

**Echuca Office:**  
107-113 Northern Hwy  
Echuca 3564

**Bendigo Office:**  
234 Woodward Road  
Golden Square 3551

A yellow CAT 259D3 skid steer loader is shown in a dark, low-key photograph. The machine is positioned on a pile of gravel, with its bucket raised and tilted. The CAT logo is visible on the side of the machine, and the model number "259D3" is printed on the boom. The background is dark and out of focus, suggesting a wooded area.

**LEADERS  
— IN —  
TECHNOLOGY  
& SAFETY**

**[luxtonplant.com.au](http://luxtonplant.com.au)  
1300 LUXTON (589 866)**